

Installation Guide

Replacement SmoothControl+™ Hold Open Block for Andersen® 1-1/2" Fullview Storm Doors



Please Do Not Return Product to Store!

PLEASE call the storm door Solution Center at 1-800-933-3626,
with any questions regarding installation, lost part replacement, or anything else related to your storm door purchase.

Read this entire guide before you begin your installation. If your abilities do not match the requirements of this installation, contact an experienced contractor.

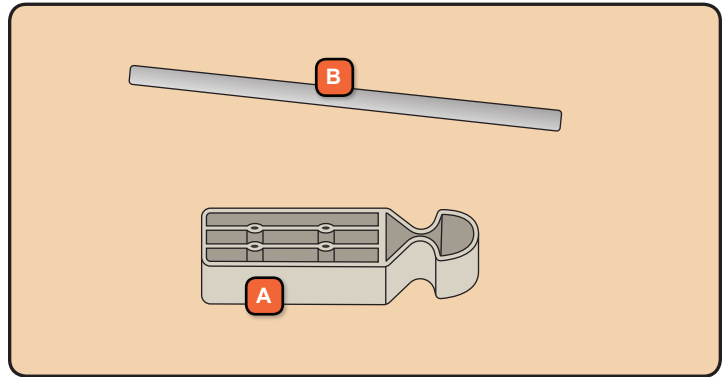
PARTS OVERVIEW

Your installation kit should contain the following parts. However, in some door models, not all of the parts will be used.

- A** Hold Open Block
- B** Push Stick

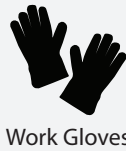
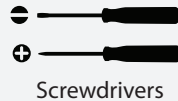
Not Shown

- C** Pink Hardware Bag
- D** Clear Hardware Bag



SAFETY FIRST: Please read and follow all Cautions and Warnings in this guide.

RECOMMENDED TOOLS



WARNING

Storm doors have small parts. Small parts if swallowed could pose a choking hazard to young children. Dispose of unused, loose, or easily removed small parts. Failure to do so could result in injury.

CAUTION

Some components may contain sharp edges. Wear appropriate protective equipment to avoid potential injury.

CAUTION

Closer is under tension and has several areas that can pinch. Use caution when working around the closer components. Failure to do so may result in injury.



This is the Safety Alert Symbol used to alert you to potential injury hazards. Obey all safety messages that follow this symbol to avoid possible injury or death.

Signal Word and Consequence

COULD



Result in:

Major Injury / Death

COULD



Result in:

Minor Injury

COULD



Result in:

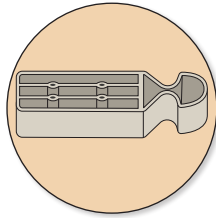
Product or Property Damage



Procedure and Product Information

1

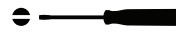
REMOVE HOLD OPEN BLOCK AND INSTALL REPLACEMENT PART



Tools recommended:

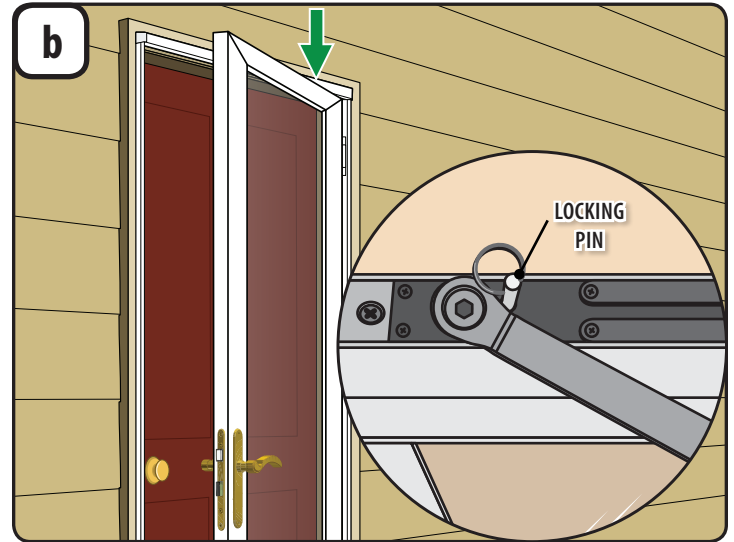
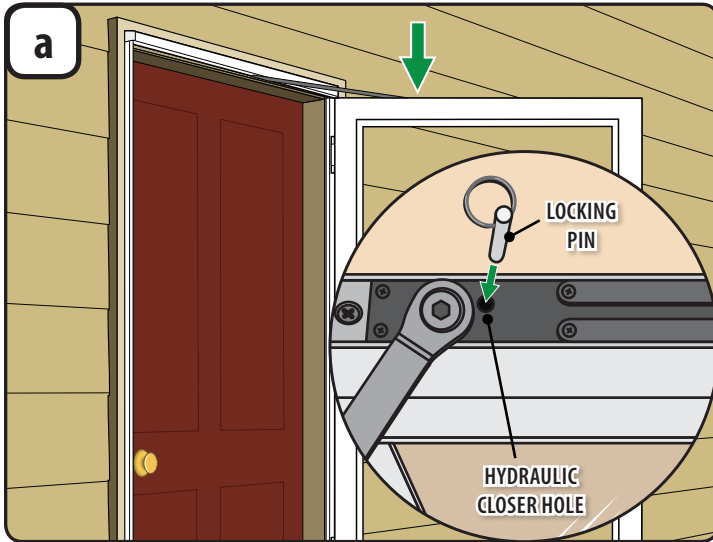


Hex Wrench (provided)



Screwdrivers

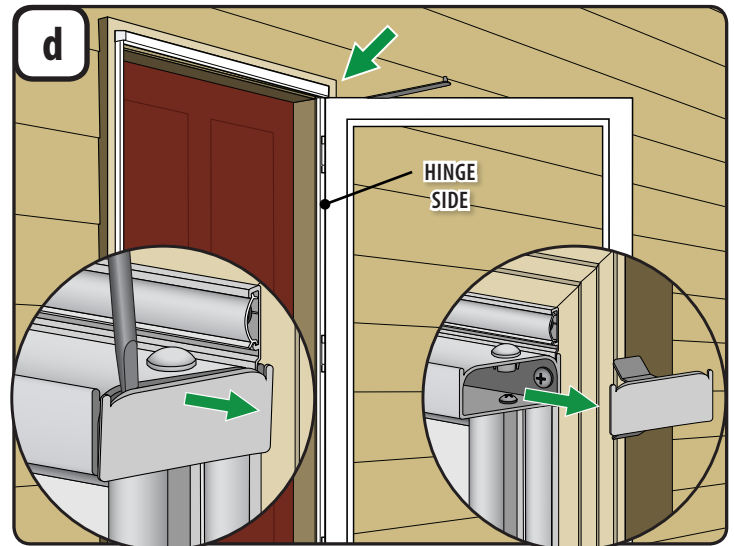
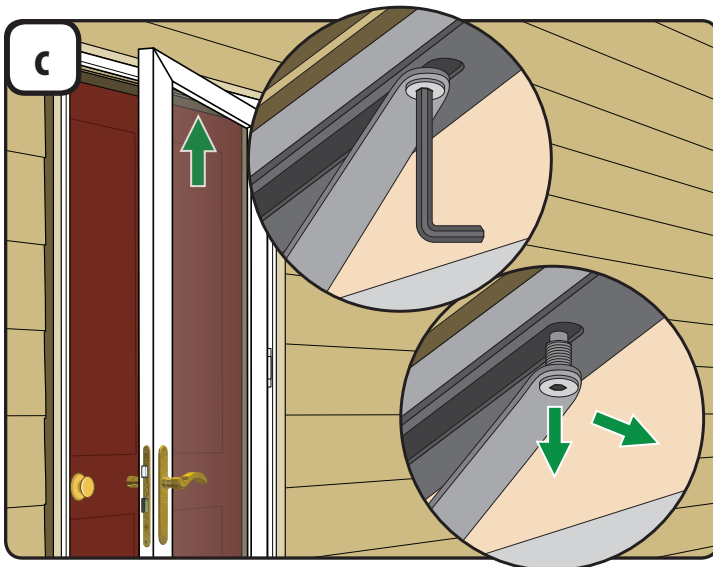
Push Stick (provided)



1. With the door seated in the open position look for the hole in the top of the hydraulic closer unit on top of the door frame. Insert the locking pin found in the pink hardware bag into the hydraulic closer hole.

1. Close the door until the closer arm is resting against the locking pin which will keep the door from closing fully.

NOTE: Images shown are for left hand doors. Right hand doors will appear as a mirror image in each step.



1. Loosen the hydraulic closer arm connecting bolt on the under-side of the rain cap damper assembly using the hex wrench provided in the pink hardware bag.

NOTE: The connecting bolt is secured to the closer arm.

2. Once the connecting bolt is completely loose, pull down slightly on the closer arm and swing the door out of the way.

1. Identify the hinge side of your door. Using a flat blade screwdriver, separate the hinge side endcap from the rain cap assembly and firmly pull sideways until it is completely removed. Set aside endcap for later use.

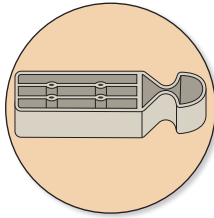
NOTE: Images shown are for left hand doors, right hand doors hinge side is the opposite side of door.

IMPORTANT

Cover the connecting bolt and the end of the disconnected closer arm with tape and secure the door to protect nearby painted parts during the remainder of this replacement process.

1

REMOVE HOLD OPEN BLOCK AND INSTALL REPLACEMENT PART (continued)



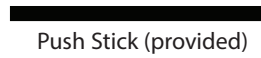
Tools recommended:



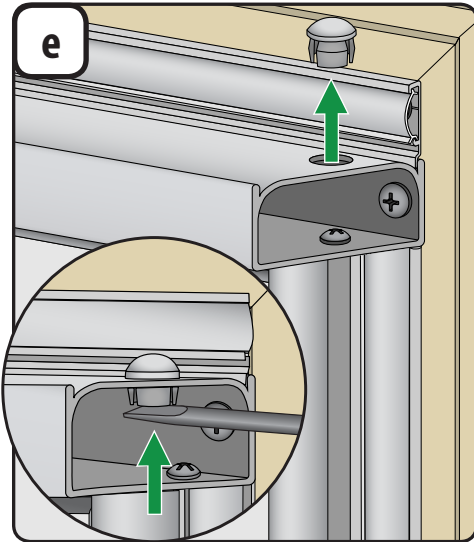
Hex Wrench (provided)



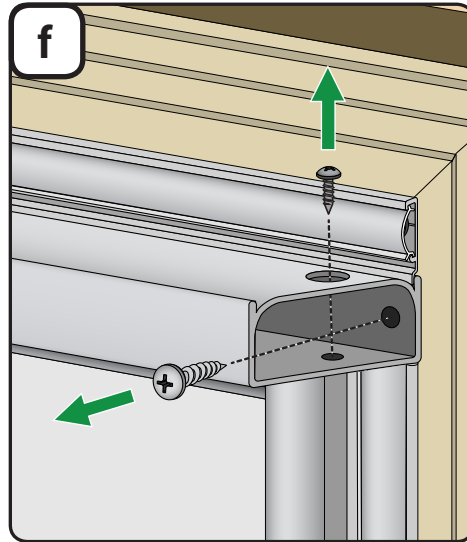
Screwdrivers



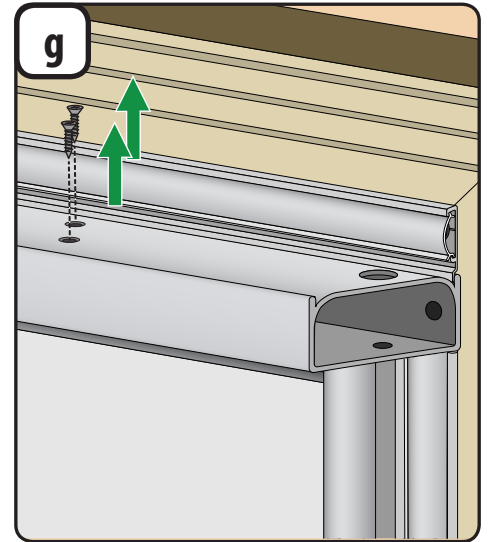
Push Stick (provided)



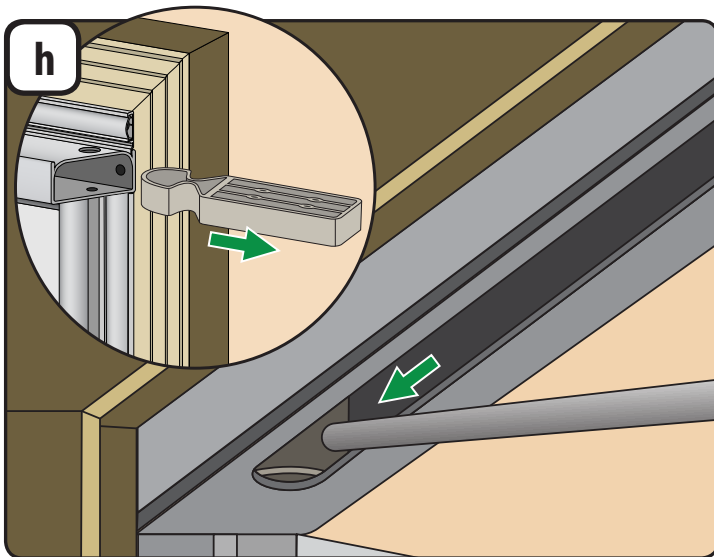
1. Remove the hole plug on top of rain cap by pressing up on the bottom side of the plug using a flat blade screwdriver.



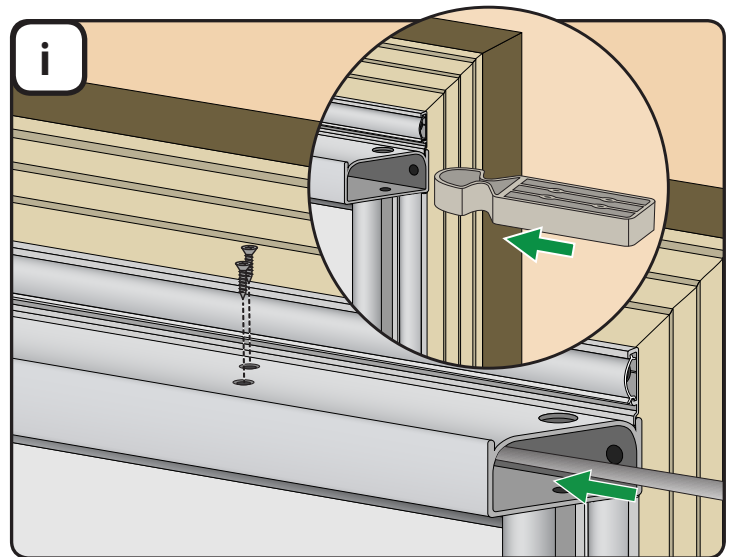
1. Using a Phillips screwdriver, remove both screws in the end of the rain cap. Properly discard screws.



1. Remove both screws on top of the rain cap that are attached to the hold open block. Properly discard screws.



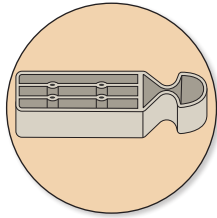
1. From interior side of door, remove the old hold open block by pushing it with the provided plastic push stick through the slot in the bottom of the rain cap and out through the open end of the rain cap. Dispose of the old hold open block properly.
NOTE: Door should be open during this step.



1. Using the provided push stick, install the new hold open block by pushing it through the open end of the rain cap until the holes in the block line up with the holes in the top of the rain cap. If your entryway does not allow your door to open past 90 degrees, continue to slide the block until the second set of holes line up with the open holes in the rain cap.
NOTE: Door should be open during this step.
2. Install two #8 x 1/2" flat head screws provided in the clear hardware bag through the holes in the top of the rain cap and into the holes of the hold open block.

1

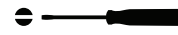
REMOVE HOLD OPEN BLOCK AND INSTALL REPLACEMENT PART (continued)



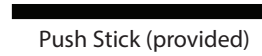
Tools recommended:



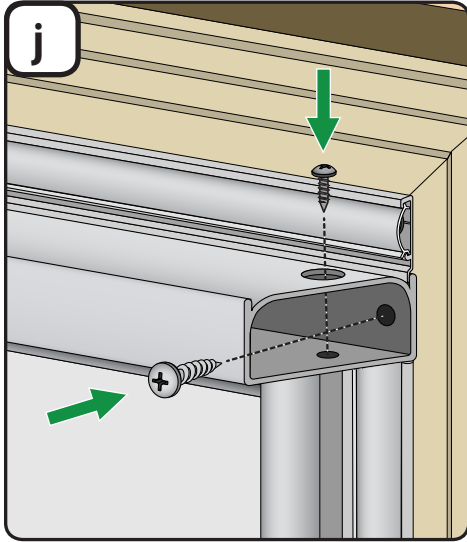
Hex Wrench (provided)



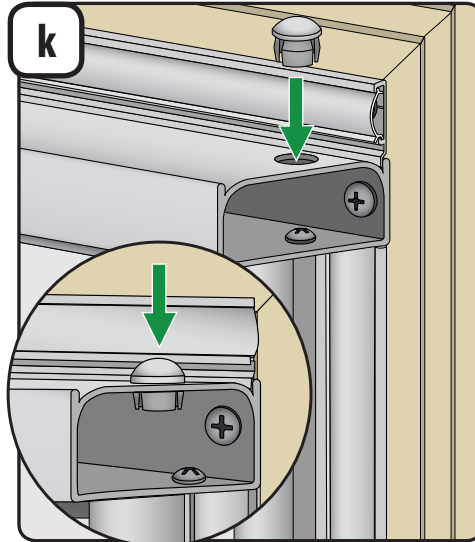
Screwdrivers



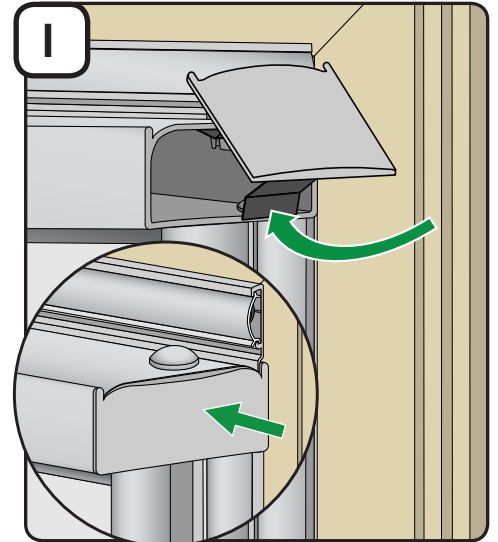
Push Stick (provided)



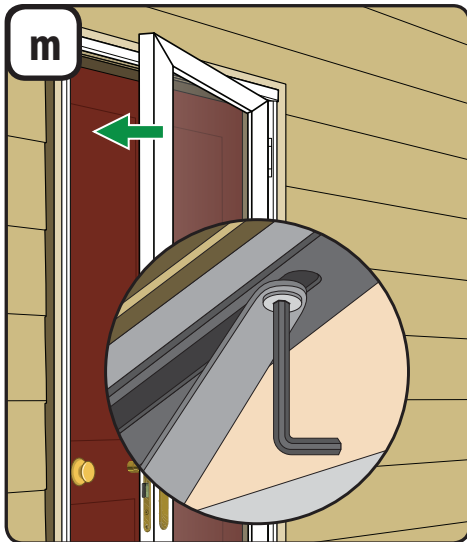
1. Using a Phillips screwdriver, install the small #6 x 3/8" screw found in the pink hardware bag into the small hole in the end of the rain cap to connect the rain cap to the hinge side mounting rail.
2. Install the #8 x 1" screw found in the clear hardware bag into the hole connecting the rain cap to the entry door mounting surface.



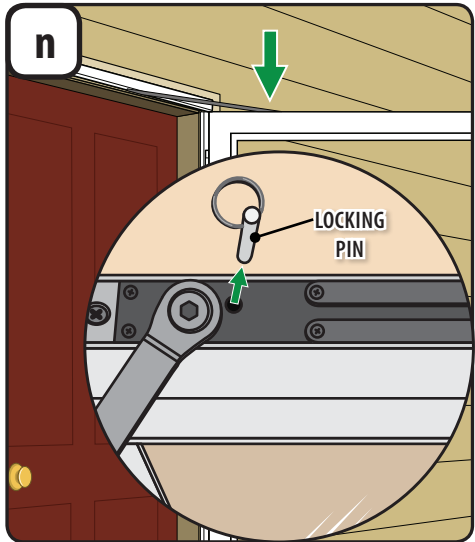
1. Reinstall the hole plug by pushing down until the plug is flush with top of the rain cap.



1. Reinstall the end cap by inserting the top half of the metal spring clip into the end of the rain cap then press up on the bottom half of the metal spring clip while rotating it into place.
2. Continue to squeeze the metal spring clip legs and move the end cap in a back-and-forth motion until it is completely flush with the rain cap.



1. Partially close the door and pull down slightly on the closer arm to align the bolt under the rain cap. Reconnect the hydraulic closer arm to the rain cap damper assembly using the provided hex wrench.



1. Open door fully and remove the locking pin from the top of the hydraulic closer unit.