

# Installation Guide

## Replacement SmoothControl+™ Endcaps for Andersen® 1-1/2" Fullview Storm Doors



### Please Do Not Return Product to Store!

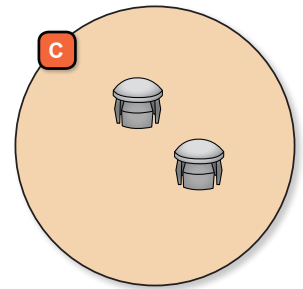
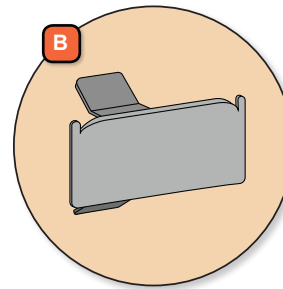
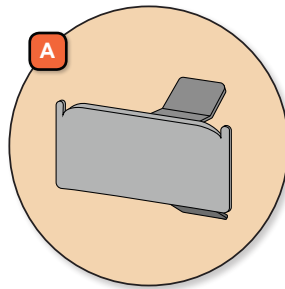
**PLEASE** call the storm door Solution Center at 1-800-933-3626, with any questions regarding installation, lost part replacement, or anything else related to your storm door purchase.

**Read this entire guide before you begin your installation. If your abilities do not match the requirements of this installation, contact an experienced contractor.**

### PARTS OVERVIEW

Your installation kit should contain the following parts. However, in some door models, not all of the parts will be used.

- A** Left Hand End Cap
- B** Right Hand End Cap
- C** Hole Plugs

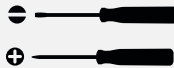


### SAFETY FIRST: Please read and follow all Cautions and Warnings in this guide.

#### RECOMMENDED TOOLS



Safety Glasses



Screwdrivers



Work Gloves

#### **WARNING**

Storm doors have small parts. Small parts if swallowed could pose a choking hazard to young children. Dispose of unused, loose, or easily removed small parts. Failure to do so could result in injury.

#### **CAUTION**

Some components may contain sharp edges. Wear appropriate protective equipment to avoid potential injury.



This is the Safety Alert Symbol used to alert you to potential injury hazards. Obey all safety messages that follow this symbol to avoid possible injury or death.

#### Signal Word and Consequence

COULD



Result in:

Major Injury / Death

COULD



Result in:

Minor Injury

COULD



Result in:

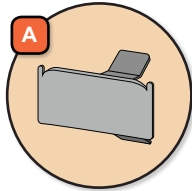
Product or Property Damage



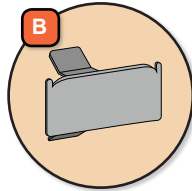
Procedure and Product Information

# 1

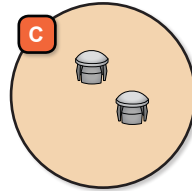
## REMOVE END CAPS & PLUGS AND INSTALL REPLACEMENT PARTS



Left Hand End Cap



Right Hand End Cap

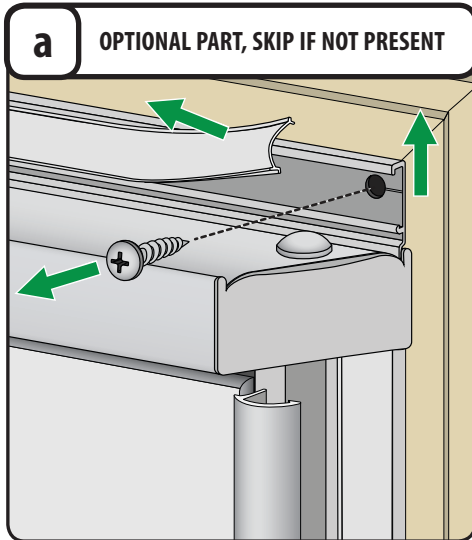


Hole Plugs

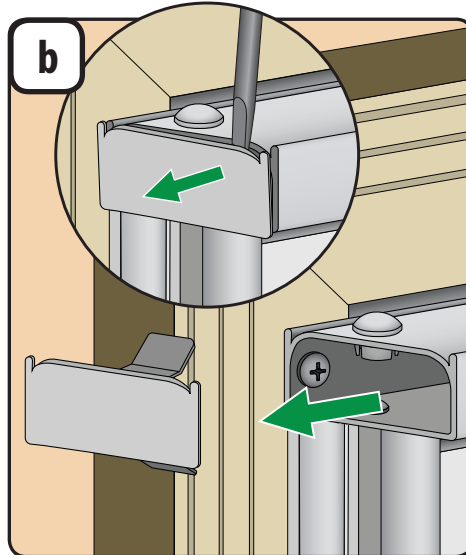
Tools recommended:



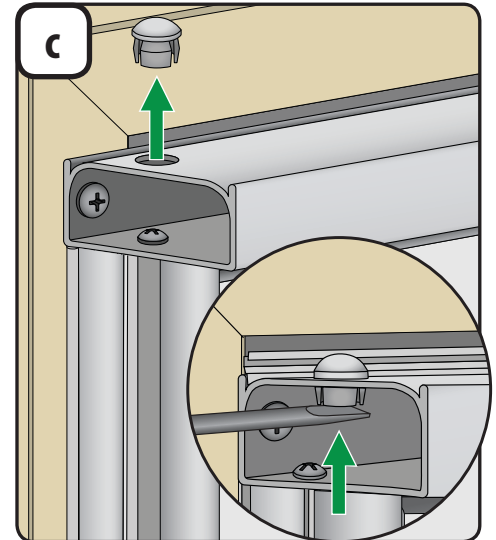
Screwdrivers



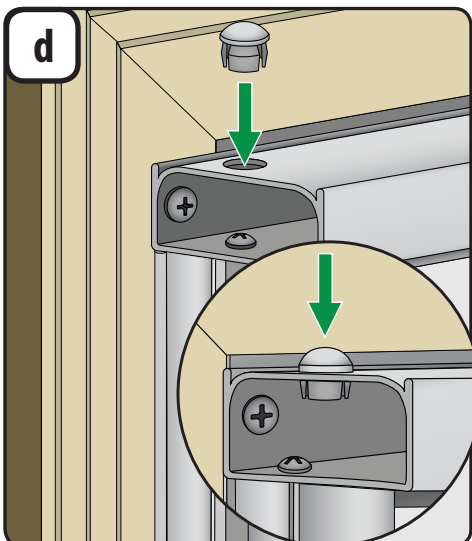
1. If a rain cap extender is installed above your rain cap damper assembly it will need to be removed. Remove screw cover by slowly pulling from one end. Save for reuse.
2. With a Phillips screwdriver remove the three screws securing extender to mounting surface, then lift up on extender to remove it from the channel. Save for reuse.



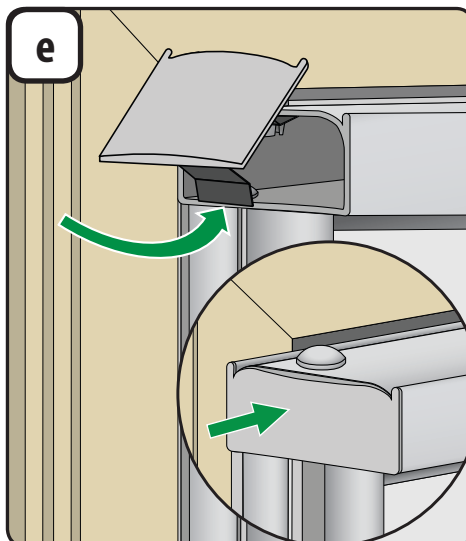
1. Using a flat blade screwdriver, separate the endcap from the rain cap damper assembly and firmly pull sideways until it is completely removed.
2. Repeat for other end.



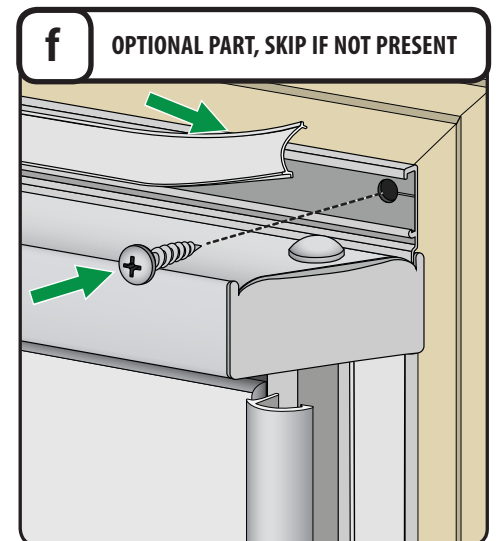
1. Remove old hole plugs at each end by pressing up on the bottom side of the plugs using a flat blade screwdriver.



1. Install the new hole plugs from the replacement kit into the holes at each end the rain cap damper assembly.



1. Install the replacement end caps by inserting the top half of the metal spring clip into the end of the rain cap damper assembly then press up on the bottom half of the metal spring clip while rotating it into place.
2. Continue to squeeze the metal spring clip legs and move the end cap in a back-and-forth motion until it is completely flush with the rain cap damper assembly.



1. If a rain cap extender was installed above your rain cap damper assembly, reinstall with the three #8 x 1" pan head screws removed previously. Be sure the foot is in rain cap groove and the holes line up.
2. Install the screw cover by inserting the side of the screw cover into the side of the screw track. Press on the other side to snap it in place. Make sure it snaps in the entire length of the screw track.