

Installation Guide

Replacement SmoothControl+™ Cover Plate for Andersen® 1-1/2" Self-Storage Storm Doors



Please Do Not Return Product to Store!

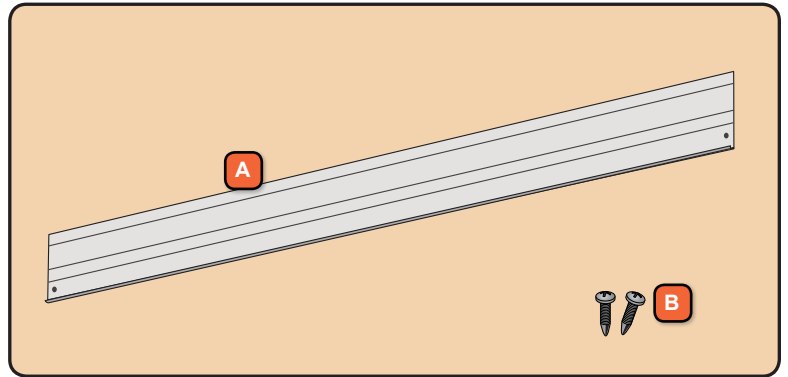
PLEASE call the storm door Solution Center at 1-800-933-3626, with any questions regarding installation, lost part replacement, or anything else related to your storm door purchase.

Read this entire guide before you begin your installation. If your abilities do not match the requirements of this installation, contact an experienced contractor.

PARTS OVERVIEW

Your installation kit should contain the following parts. However, in some door models, not all of the parts will be used.

- A** Cover Plate (Qty 8, one in each color)
- B** #8 x 1/2" Painted Pan Head Screw (Qty 16, two in each color)



SAFETY FIRST: Please read and follow all Cautions and Warnings in this guide.

RECOMMENDED TOOLS



Safety Glasses



Phillips Screwdriver



Work Gloves



This is the Safety Alert Symbol used to alert you to potential injury hazards. Obey all safety messages that follow this symbol to avoid possible injury or death.

Signal Word and Consequence

COULD Result in:

WARNING
Major Injury / Death

COULD Result in:

CAUTION
Minor Injury

COULD Result in:

NOTICE
Product or Property Damage

IMPORTANT
Procedure and Product Information

WARNING

Storm doors have small parts. Small parts if swallowed could pose a choking hazard to young children. Dispose of unused, loose, or easily removed small parts. Failure to do so could result in injury.

CAUTION

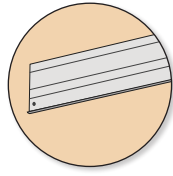
Some components may contain sharp edges. Wear appropriate protective equipment to avoid potential injury.

WARNING

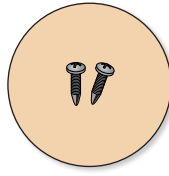
Follow manufacturers' instructions for hand and power tools. Always wear safety glasses. Failure to do so could result in injury, product or property damage.

1

**REMOVE INSECT
SCREEN COVER
PLATE AND INSTALL
REPLACEMENT PART**



Insect Screen
Cover Plate

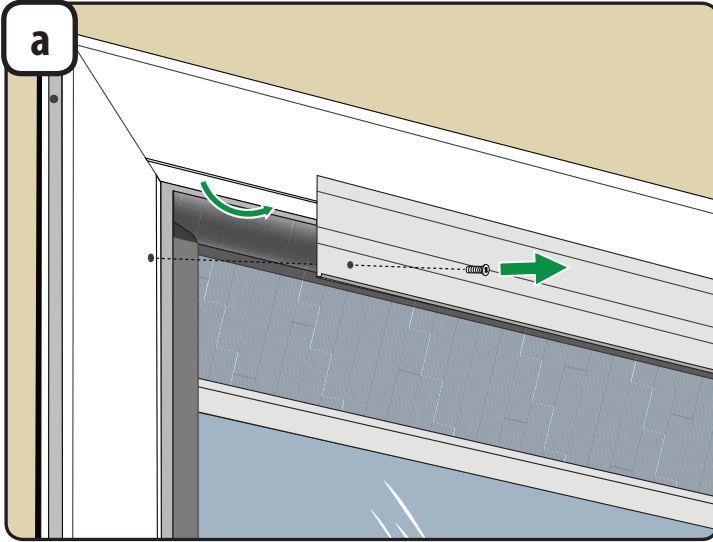


#8 x 1/2" Painted Pan
Head Screws (Qty 2)

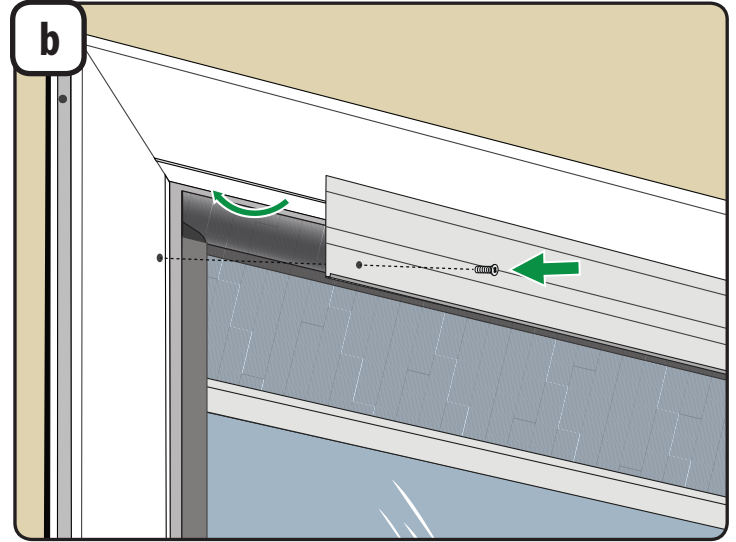
Tools recommended:



Phillips
Screwdriver



1. Using a Phillips head screwdriver, remove screws from the insect screen cover plate.
2. Once loose, pull cover plate from door frame by rotating up and pulling out toward you.
3. Properly dispose of insect screen cover plate and screws.



1. Be sure to select the plate and two screws that match your door color. Dispose of all other screws and plates properly.
2. Insert the curved edge of the insect screen cover plate into the groove in top of door frame. Rotate down until the holes in the insect screen cover plate align with those in the door frame.
3. Secure the insect screen cover plate to the door frame with the two (2) color matched screws provided.