

Installation Guide

Replacement SmoothControl+™ Hydraulic Closer Torque Arm & Bolt Assembly for Andersen® 1-1/2" Fullview Storm Doors



Please Do Not Return Product to Store!

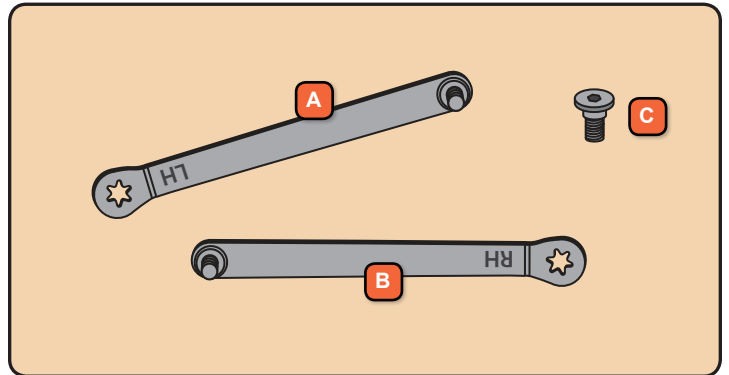
PLEASE call the storm door Solution Center at 1-800-933-3626, with any questions regarding installation, lost part replacement, or anything else related to your storm door purchase.

Read this entire guide before you begin your installation. If your abilities do not match the requirements of this installation, contact an experienced contractor.

PARTS OVERVIEW

Your installation kit should contain the following parts. However, in some door models, not all of the parts will be used.

- A** Left Hand Hydraulic Closer Arm & Bolt Assembly
- B** Right Hand Hydraulic Closer Arm & Bolt Assembly
- C** Connecting Bolt
- D** **Not Shown**
Pink Hardware Bag

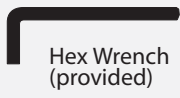


SAFETY FIRST: Please read and follow all Cautions and Warnings in this guide.

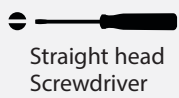
RECOMMENDED TOOLS



Safety Glasses



Hex Wrench (provided)



Straight head Screwdriver



Work Gloves

WARNING

Storm doors have small parts. Small parts if swallowed could pose a choking hazard to young children. Dispose of unused, loose, or easily removed small parts. Failure to do so could result in injury.

CAUTION

Some components may contain sharp edges. Wear appropriate protective equipment to avoid potential injury.

CAUTION

Closer is under tension and has several areas that can pinch. Use caution when working around the closer components. Failure to do so may result in injury.



This is the Safety Alert Symbol used to alert you to potential injury hazards. Obey all safety messages that follow this symbol to avoid possible injury or death.

Signal Word and Consequence

COULD

WARNING

Result in:

Major Injury / Death

COULD

CAUTION

Result in:

Minor Injury

COULD

NOTICE

Result in:

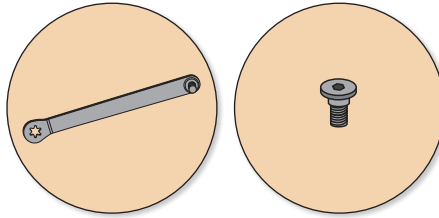
Product or Property Damage

IMPORTANT

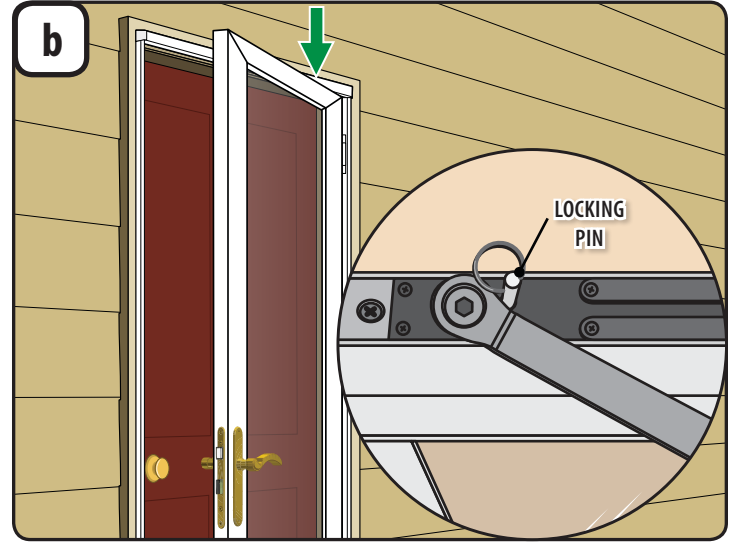
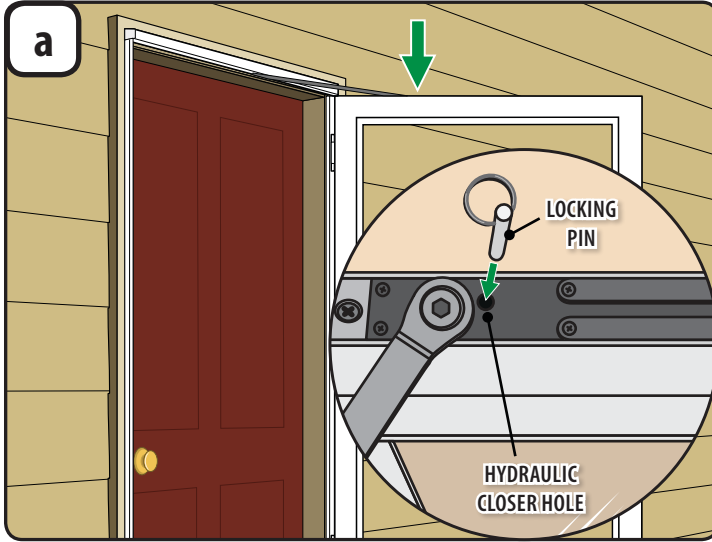
Procedure and Product Information

1

REMOVE HYDRAULIC CLOSER TORQUE ARM AND INSTALL REPLACEMENT PART



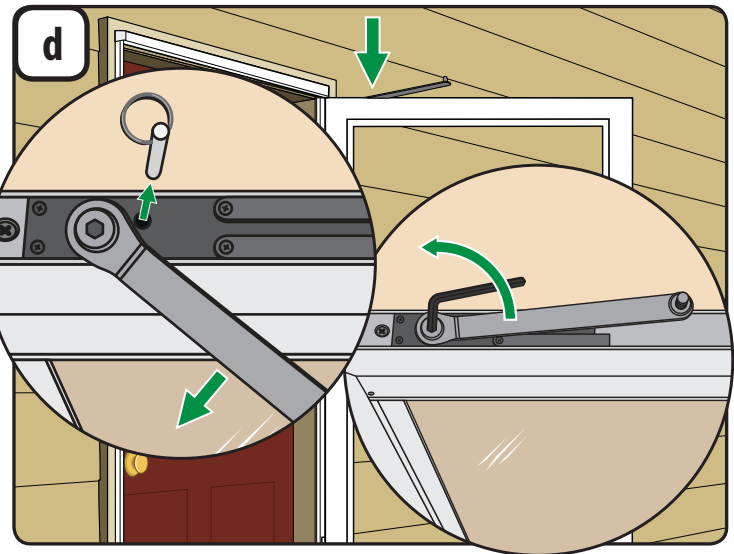
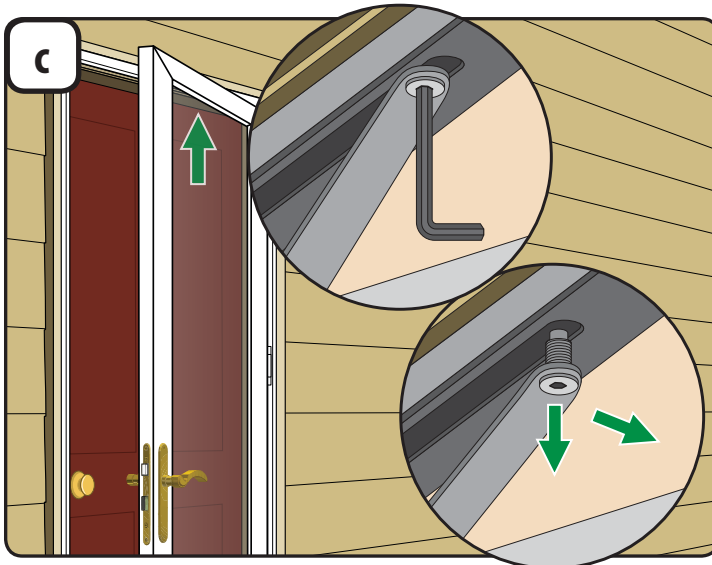
Tools recommended:



1. With the door seated in the open position look for the hole in the top of the hydraulic closer unit on top of the door frame. Insert the locking pin found in the pink hardware bag into the hydraulic closer hole.

1. Close the door until the closer arm is resting against the locking pin which will keep the door from closing fully.

NOTE: Images shown are for left hand doors. Right hand doors will appear as a mirror image in each step.

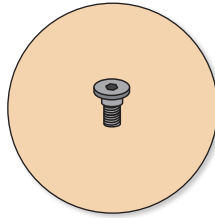
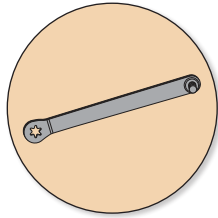


1. Loosen the hydraulic closer arm connecting bolt on the under-side of the rain cap damper assembly using the hex wrench provided in the pink hardware bag.
NOTE: The connecting bolt is secured to the closer arm.
2. Once the connecting bolt is completely loose, pull down slightly on the closer arm and swing the door out of the way.

1. Remove the locking pin from the top of the hydraulic closer unit by pulling the closer arm slightly away from the door frame and lifting locking pin from closer hole. Then carefully let the closer arm swing back to its neutral position over the closer.
2. Loosen the hydraulic closer arm connecting bolt on top of the closer unit using the provided hex wrench. Properly dispose of connecting bolt.

1

REMOVE HYDRAULIC CLOSER ARM AND INSTALL REPLACEMENT PART (continued)



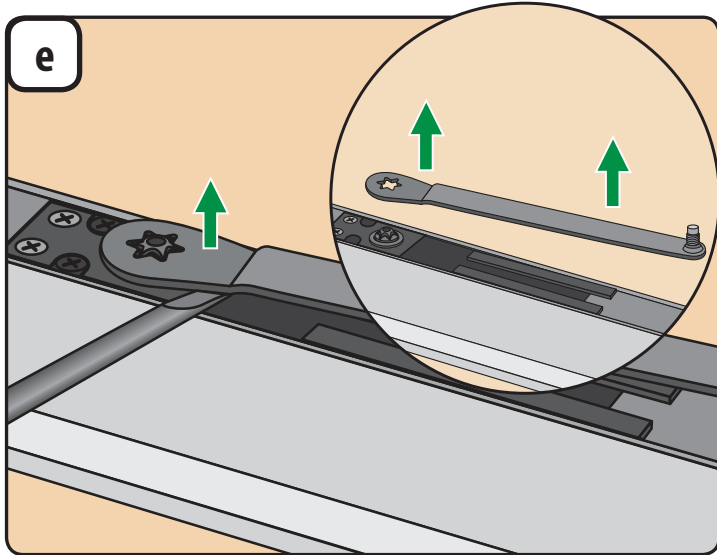
Tools recommended:



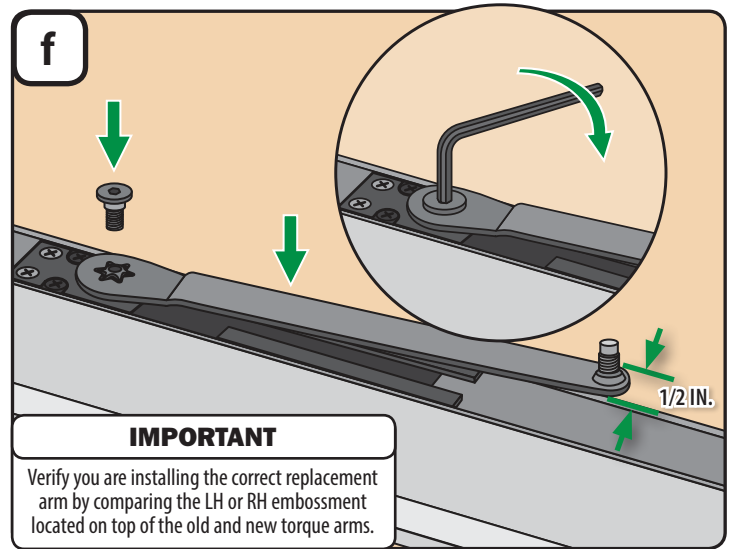
Hex Wrench (provided)



Straight head Screwdriver



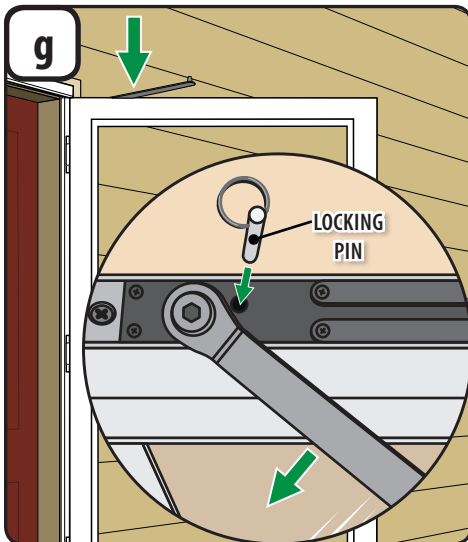
1. Slide a flat blade screwdriver between the hydraulic closer arm and the top of the door frame. Position the screwdriver near the pivot point connection of the closer arm.
2. Lift up on the hydraulic closer arm with the screwdriver and move the free end of the arm up and down slightly until it is completely removed from the shaft connection. Properly dispose of old closer arm



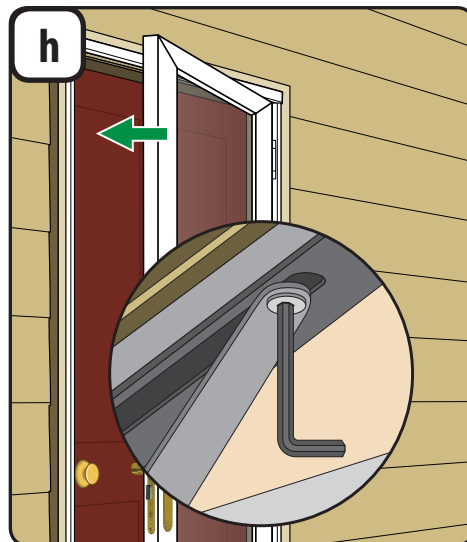
IMPORTANT

Verify you are installing the correct replacement arm by comparing the LH or RH embossment located on top of the old and new torque arms.

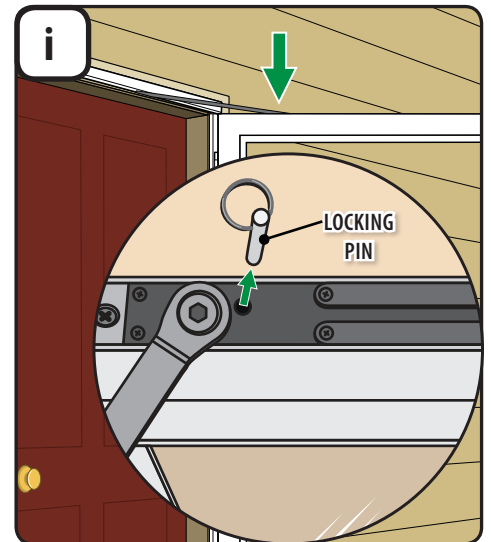
1. Install the new hydraulic closer arm onto the shaft. When installed correctly, the arm should extend approximately 1/2" past the front face of the door frame.
2. Install and tighten the new arm connecting bolt using the provided hex wrench.
NOTE: If your replacement kit included a plastic washer, properly discard the washer. It is not needed in this installation.



1. Pull the closer arm away from door frame until it clears the hydraulic closer hole, then reinstall the locking pin into the top of the hydraulic closer unit.



1. Close the door and pull down slightly on the closer arm to align the bolt under the rain cap damper assembly. Reconnect the hydraulic closer arm to the rain cap damper assembly using the provided hex wrench.



1. Open door fully and remove the locking pin from the top of the hydraulic closer unit.