

# Installation Guide

## Replacement SmoothControl+™ Rain Cap Assembly with Extender for Andersen® 1-1/2" Fullview Storm Doors



### Please Do Not Return Product to Store!

**PLEASE** call the storm door Solution Center at 1-800-933-3626, with any questions regarding installation, lost part replacement, or anything else related to your storm door purchase.

**Read this entire guide before you begin your installation. If your abilities do not match the requirements of this installation, contact an experienced contractor.**

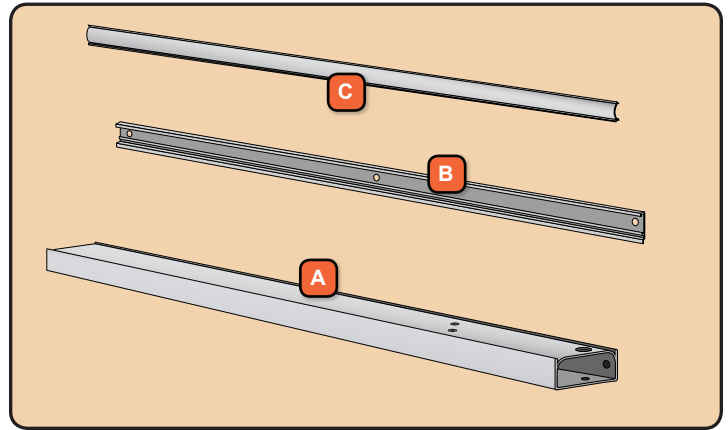
### PARTS OVERVIEW

Your installation kit should contain the following parts. However, in some door models, not all of the parts will be used.

- A** Rain Cap Assembly
- B** Rain Cap Extender
- C** Screw Cover

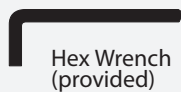
#### Not Shown

- D** Pink Hardware Bag
- E** Installation / End Cap Kit



### SAFETY FIRST: Please read and follow all Cautions and Warnings in this guide.

#### RECOMMENDED TOOLS



#### **WARNING**

Storm doors have small parts. Small parts if swallowed could pose a choking hazard to young children. Dispose of unused, loose, or easily removed small parts. Failure to do so could result in injury.

#### **CAUTION**

Some components may contain sharp edges. Wear appropriate protective equipment to avoid potential injury.

#### **CAUTION**

Closer is under tension and has several areas that can pinch. Use caution when working around the closer components. Failure to do so may result in injury.



This is the Safety Alert Symbol used to alert you to potential injury hazards. Obey all safety messages that follow this symbol to avoid possible injury or death.

#### Signal Word and Consequence

**COULD** Result in: **WARNING** Major Injury / Death

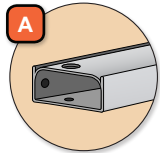
**COULD** Result in: **CAUTION** Minor Injury

**COULD** Result in: **NOTICE** Product or Property Damage

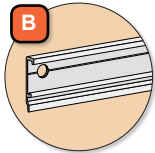
**IMPORTANT** Procedure and Product Information

# 1

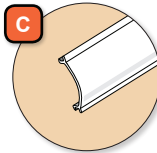
## REMOVE RAIN CAP ASSEMBLY AND INSTALL REPLACEMENT PARTS



Rain Cap



Rain Cap Extender (optional)

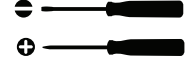


Screw Cover (optional)

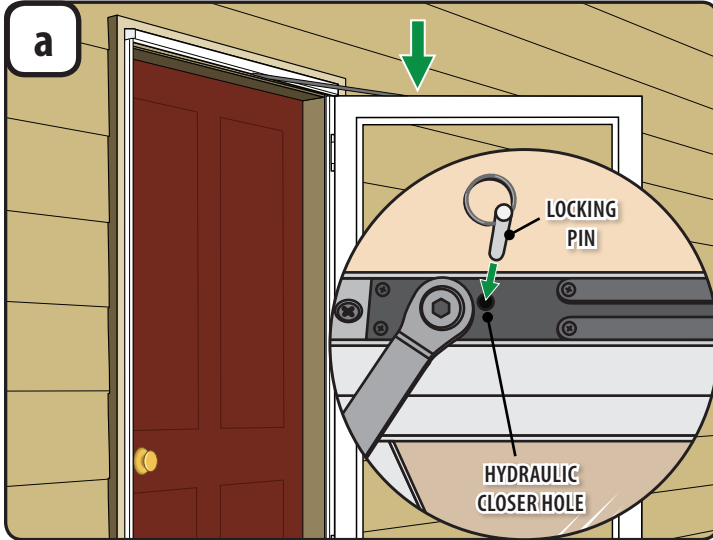
Tools recommended:



Hex Wrench (provided)

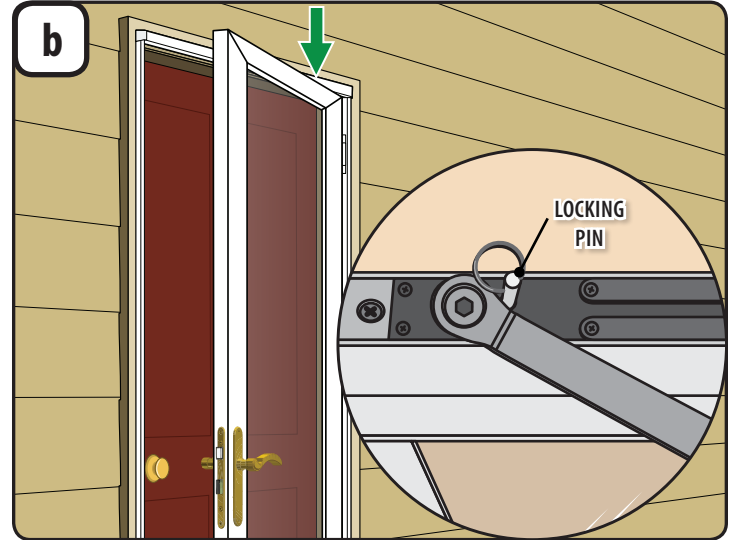


Screwdrivers

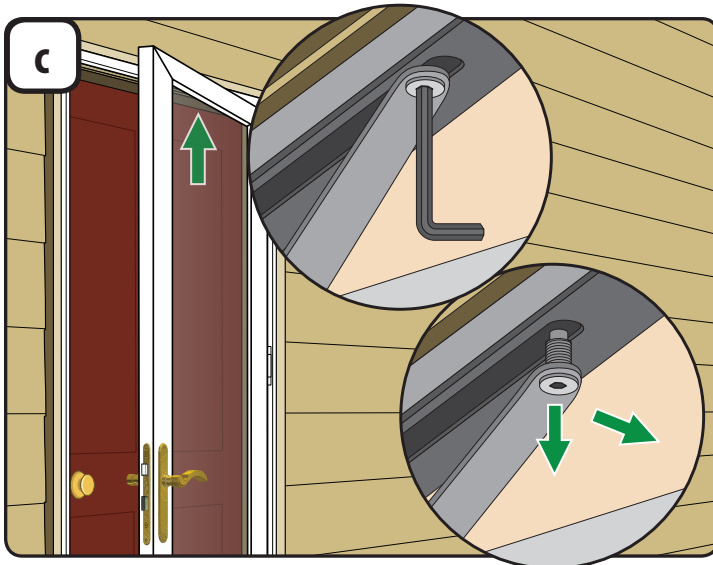


1. With the door seated in the open position look for the hole in the top of the hydraulic closer unit on top of the door frame. Insert the locking pin found in the pink hardware bag into the hydraulic closer hole.

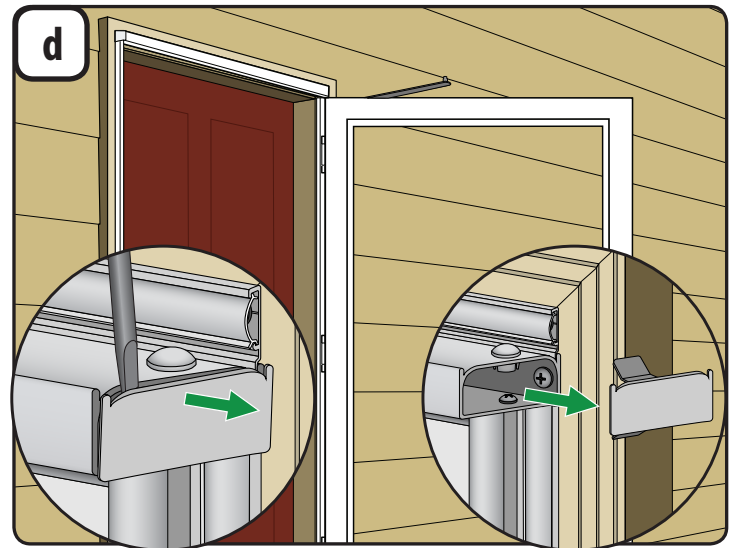
**NOTE:** Images shown are for left hand doors. Right hand doors will appear as a mirror image in each step.



1. Close the door until the closer arm is resting against the locking pin which will keep the door from closing fully.



1. Loosen the hydraulic closer arm connecting bolt under the side of the rain cap damper assembly using the hex wrench provided in the pink hardware bag.  
**NOTE:** The connecting bolt is secured to the closer arm.
2. Once the connecting bolt is completely loose, pull down slightly on the closer arm and swing the door out of the way.



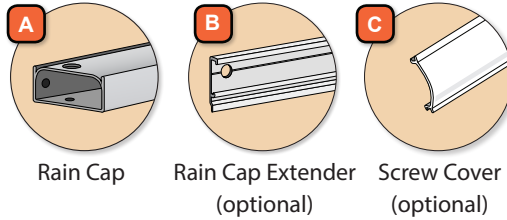
1. Using a flat blade screwdriver, separate the endcap from the rain cap assembly and firmly pull sideways until it is completely removed. Repeat step for other endcap and properly dispose of both endcaps.

### IMPORTANT

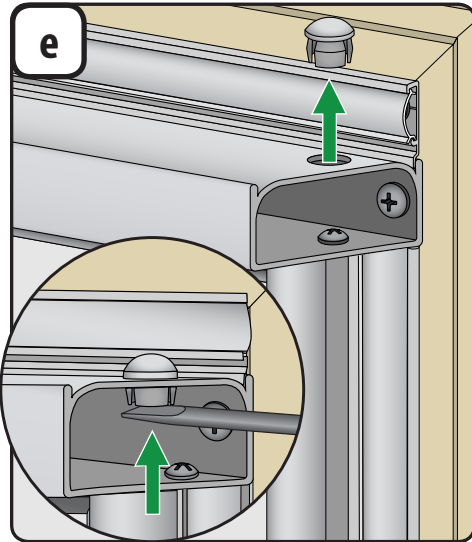
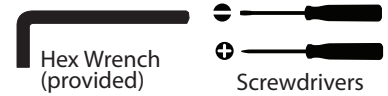
Cover the connecting bolt and the end of the disconnected closer arm with tape and secure the door to protect nearby painted parts during the remainder of this replacement process.

# 1

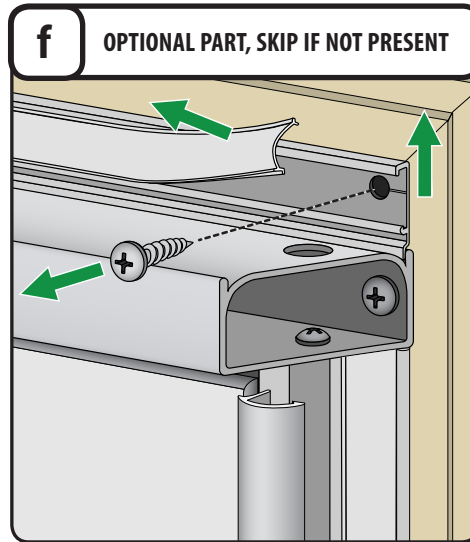
## REMOVE RAIN CAP ASSEMBLY AND INSTALL REPLACEMENT PARTS (continued)



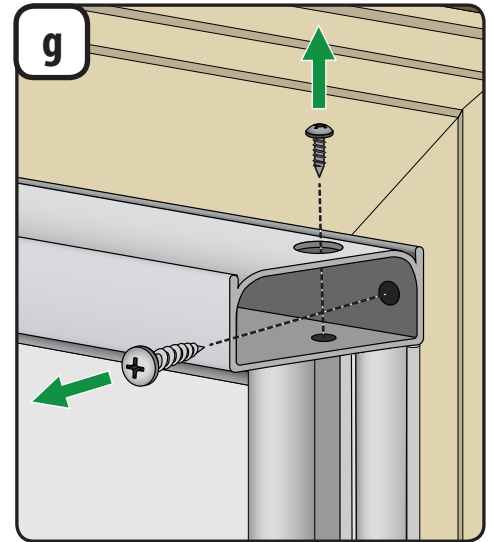
Tools recommended:



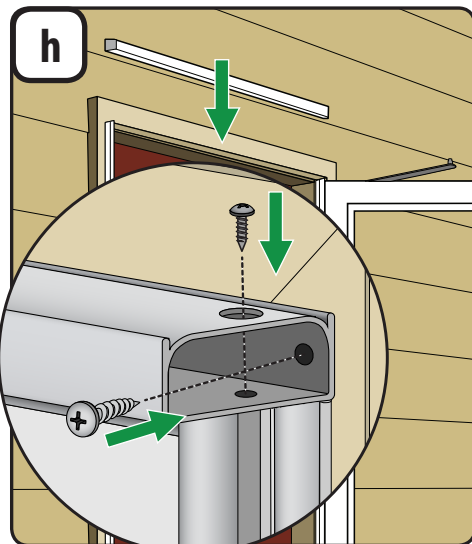
1. Remove the hole plugs at each end on top of the rain cap by pressing up on the bottom side of the plugs using a flat blade screwdriver. Properly dispose of hole plugs.



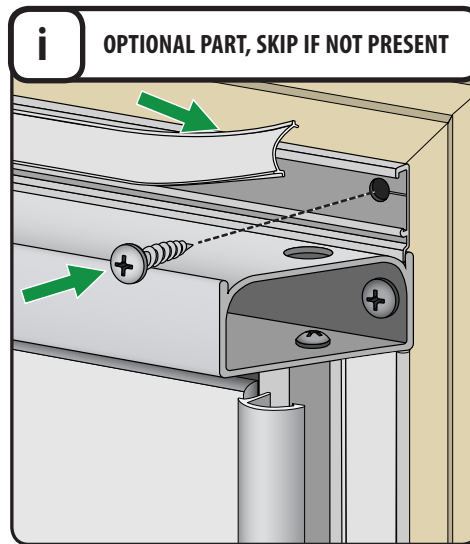
1. If a rain cap extender is installed above your rain cap it will need to be removed. Remove screw cover by slowly pulling from one end. Properly discard it.
2. With a Phillips screwdriver remove the three screws securing extender to mounting surface, then lift up on extender to remove it from the channel. Dispose of screws and extender properly.



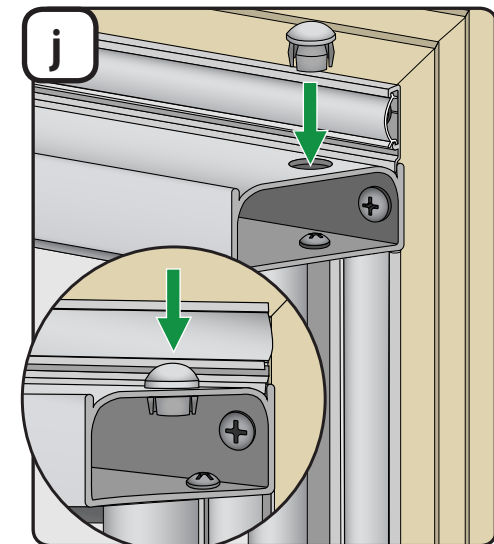
1. Using a Phillips screwdriver, remove both screws in the end of the rain cap. Repeat step for other side of rain cap. At that point the rain cap is free from door and can be properly discarded along with all the screws.



1. With a Phillips screwdriver install the new replacement rain cap assembly by driving the two #6 x 3/8" pan head screws found in the pink hardware bag into the same holes in the two side rails where the old rain cap was attached.
2. Install the two #8 x 1" pan head screws, found in the installation / endcap kit, into the old holes used to attach the rain cap and damper assembly to the entry door mounting surface..



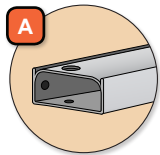
1. If a rain cap extender was installed above your rain cap install the new one with three #8 x 1" pan head screws found in the installation / endcap kit. Be sure the foot is in rain cap groove and the holes line up.
2. Install the new replacement screw cover by inserting the side of the screw cover into the side of the screw track. Press on the other side to snap it in place. Make sure it snaps in the entire length of the screw track.



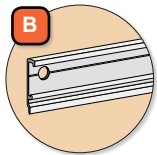
1. Install the new hole plugs, found in the installation / endcap kit, pushing them down into the hole on top of rain cap until the plug is flush with top of the rain cap.

# 1

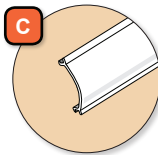
## REMOVE RAIN CAP ASSEMBLY AND INSTALL REPLACEMENT PARTS (continued)



Rain Cap



Rain Cap Extender (optional)



Screw Cover (optional)

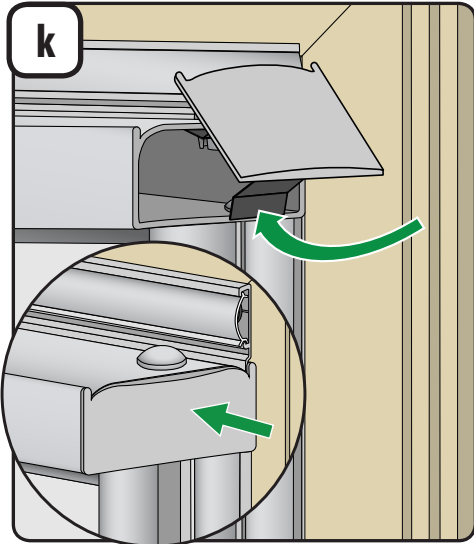
Tools recommended:



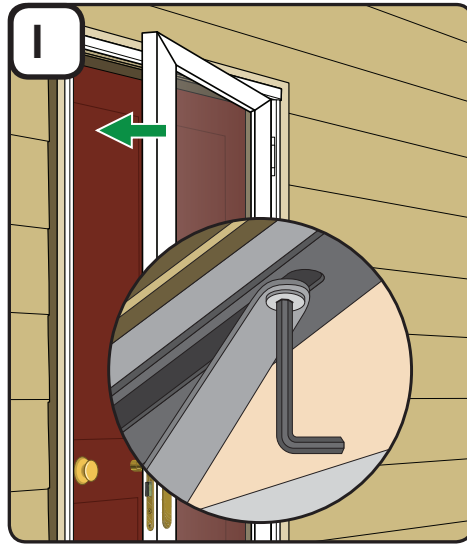
Hex Wrench (provided)



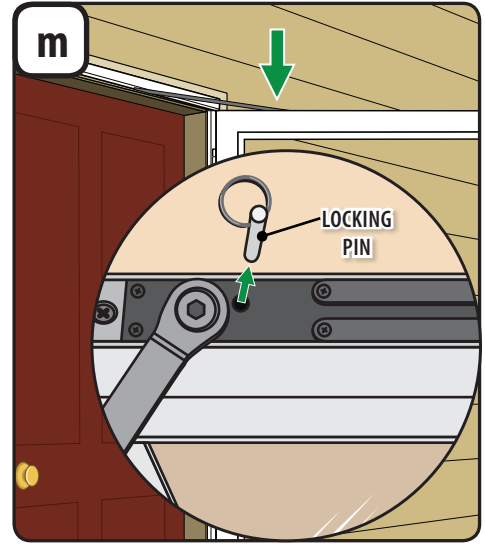
Screwdrivers



1. Install the new end caps, found in the installation / endcap kit, by inserting the top half of the metal spring clip into the end of the rain cap then press up on the bottom half of the metal spring clip while rotating it into place.
2. Continue to squeeze the metal spring clip legs and move the end cap in a back-and-forth motion until it is completely flush with the rain cap.



1. Partially close the door and pull down slightly on the closer arm to align the bolt under the rain cap. Reconnect the hydraulic closer arm to the rain cap damper assembly using the provided hex wrench.



1. Open door fully and remove the locking pin from the top of the hydraulic closer unit.

# 2

## ADJUST CLOSING SPEED OF DOOR (Left Hand)

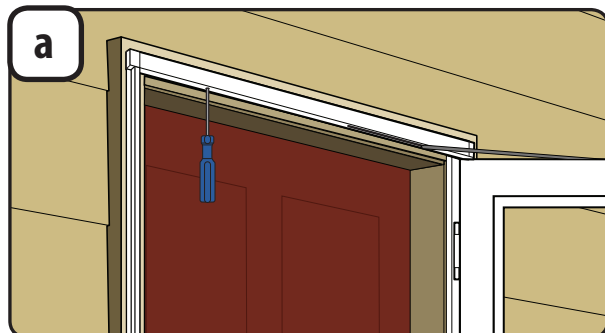


### ⚠ WARNING

Storm door will close more quickly when the entry door is open. To achieve the proper closing speed, you will need to adjust the closer using the built-in adjustment screw. Check for safe closing speed with your entry door in both the closed and open position. To prevent injury, make sure people and/or pets are completely through the opening before allowing the storm door to close freely.

### ⚠ CAUTION

Hidden closer is under tension and has several areas that can pinch as it closes the door. Use caution when working around the hidden closer components.



1. Open the door and then let it close. Note the speed at which the door closes.
2. Use a flat blade screwdriver to adjust the closer to the desired speed:  
For a faster closing speed, turn the adjustment screw to the left (counterclockwise).  
For a slower closing speed, turn the adjustment screw to the right (clockwise).
3. Test the speed at which the door closes after each adjustment. Adjust the screw more, if needed, to achieve the desired door closing speed.