

Installation Guide

Replacement SmoothControl+™ Ventilating Glass Panel for Andersen® 1-1/2" Self-Storing Storm Doors



Please Do Not Return Product to Store!

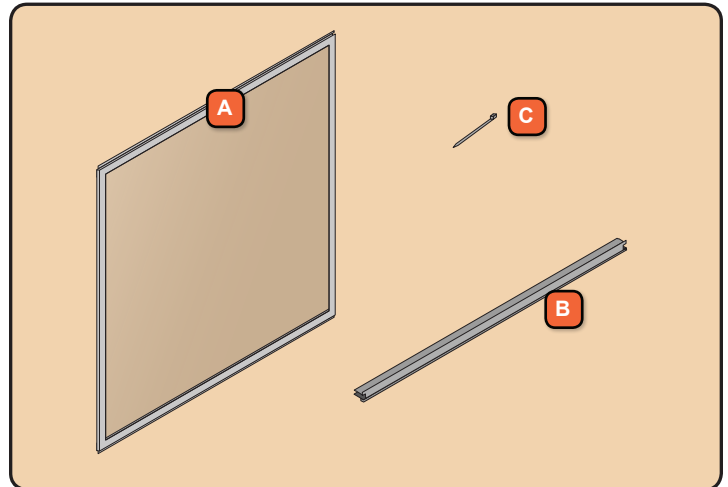
PLEASE call the storm door Solution Center at 1-800-933-3626, with any questions regarding installation, lost part replacement, or anything else related to your storm door purchase.

Read this entire guide before you begin your installation. If your abilities do not match the requirements of this installation, contact an experienced contractor.

PARTS OVERVIEW

Your installation kit should contain the following parts. However, in some door models, not all of the parts will be used.

- A** Ventilating Glass Panel
- B** Prop Rod
- C** Zip Tie



WARNING

Tape broken glass with filament or duct tape before removal to reduce glass fragmentation. Failure to do so may result in severe personal injury, product and/or property damage.



SAFETY FIRST: Please read and follow all Cautions and Warnings in this guide.

RECOMMENDED TOOLS



Safety Glasses



Phillips Screwdriver



Work Gloves



7/64 Drill Bit



Drill



Pliers



Filament Tape



Scissors



This is the Safety Alert Symbol used to alert you to potential injury hazards. Obey all safety messages that follow this symbol to avoid possible injury or death.

Signal Word and Consequence

COULD Result in: **WARNING** Major Injury / Death

COULD Result in: **CAUTION** Minor Injury

COULD Result in: **NOTICE** Product or Property Damage

IMPORTANT Procedure and Product Information

WARNING

Storm doors have small parts. Small parts if swallowed could pose a choking hazard to young children. Dispose of unused, loose, or easily removed small parts. Failure to do so could result in injury.

CAUTION

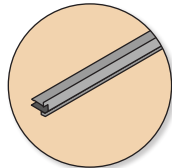
Some components may contain sharp edges. Wear appropriate protective equipment to avoid potential injury.

WARNING

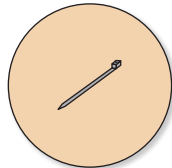
Follow manufacturers' instructions for hand and power tools. Always wear safety glasses. Failure to do so could result in injury, product or property damage.

1

REMOVE VENTILATING GLASS PANEL AND INSTALL REPLACEMENT PART

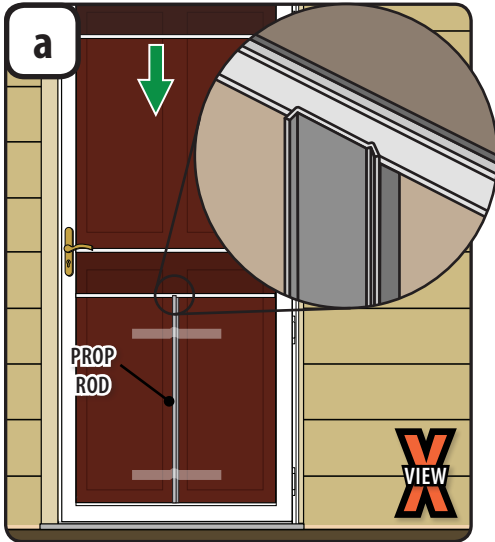
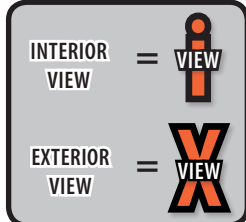


Prop Rod

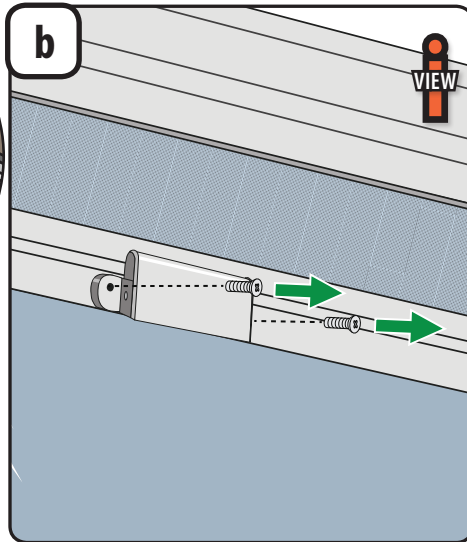


Zip Tie

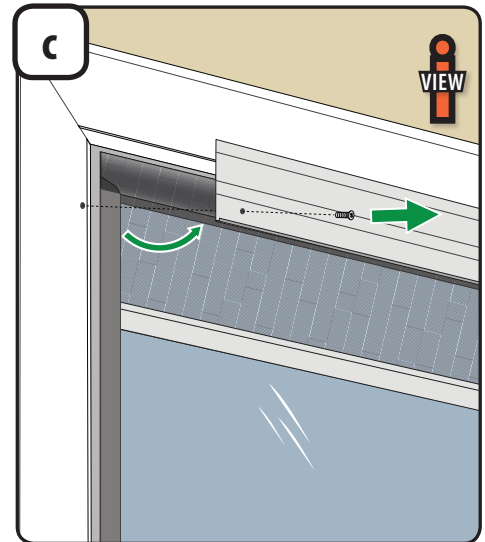
Tools recommended:



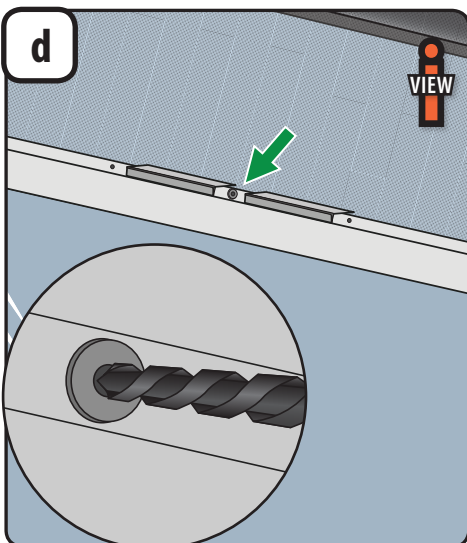
1. From the exterior, hold the prop rod up against the lower (fixed glass) panel. Slide the prop rod down so it is sitting on lower ledge of the storm door. The notch should be going from left to right.
2. Move the ventilating glass panel down until its frame is in the notch of the prop rod.
3. Tape the prop rod to the glass with filament tape across the top and bottom.



1. Using a Phillips head screwdriver, remove the two screws from the window latch assembly. Set aside for reinstallation in later steps.



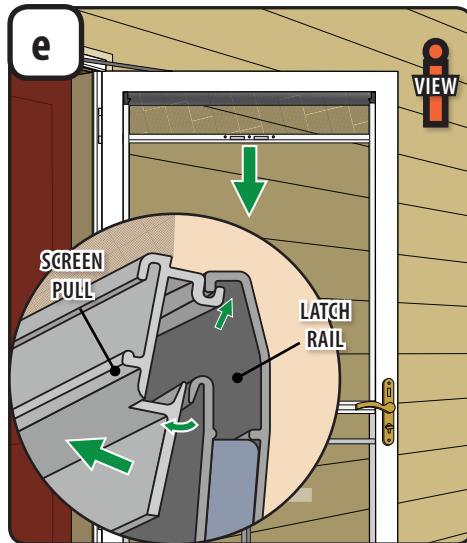
1. Using a Phillips head screwdriver, remove screws from the insect screen cover plate.
2. Once loose, pull cover plate from door frame and set a side to be reinstalled in later step.



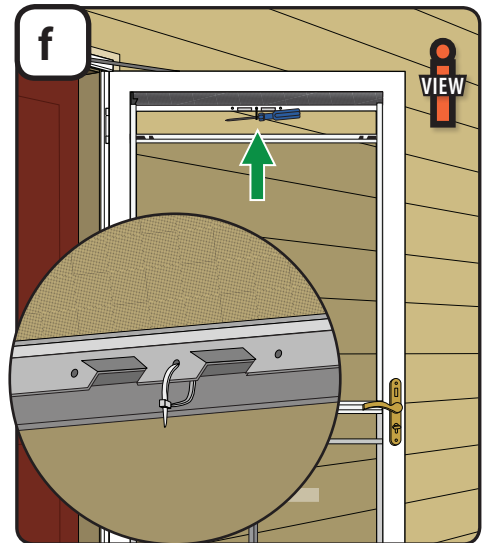
⚠ WARNING

The SlideAway® insect screen is stored inside the door with a highly tensioned spring. If released, insect screen may retract suddenly causing injury or product damage. Maintain a firm grasp when attaching the insect screen to the window.

1. Using a 7/64" drill bit, drill through the center of the rivet until the rivet head separates from the rivet body.



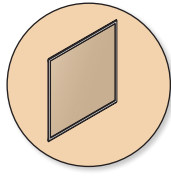
1. Firmly grasp the insect screen pull with one hand on the interior face and the other on the top exterior edge where it connects to the window.
2. Pull down slightly and away from window to disengage the hooks. Rotate bottom of insect screen pull out while pushing top back to re-engage top hook only.



1. Push the small end of the zip tie through the middle hole in the insect screen pull, then fasten it into the zip tie's lock casing. Ensure the lock casing clicks and zip tie is locked into a loop.
2. Insert the shaft of a Phillips head screwdriver through the zip tie. With a hand on each side of the screw driver, pull down insect screen pull to disengage top hook. Raise the insect screen slowly until it is retracted completely.

1

REMOVE VENTILATING GLASS PANEL AND INSTALL REPLACEMENT PART (continued)



Ventilating Glass Panel

Tools recommended:



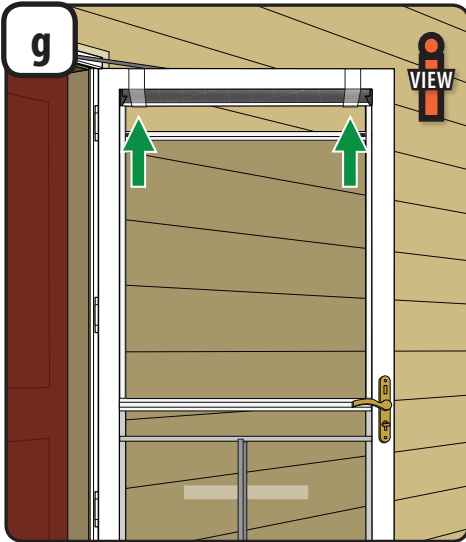
Filament Tape



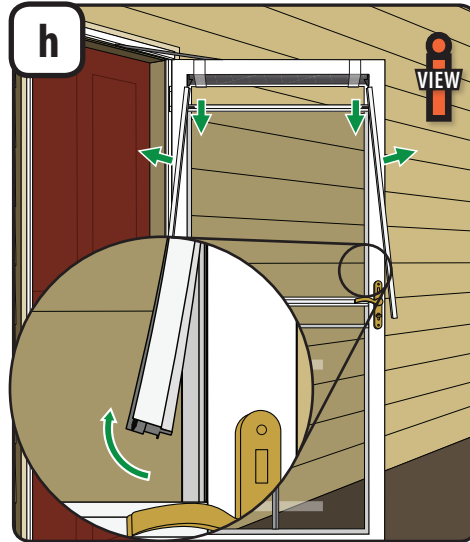
Pliers



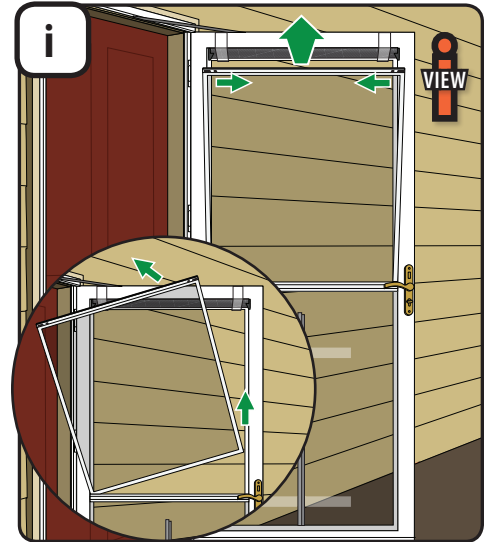
Scissors



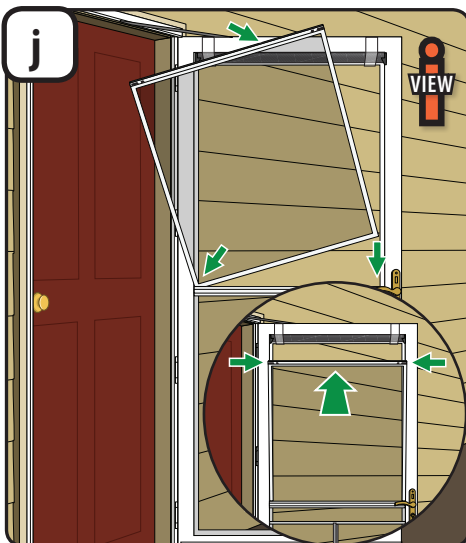
1. Wrap filament tape around the door frame and insect screen assembly in 2 locations near each end of the door.



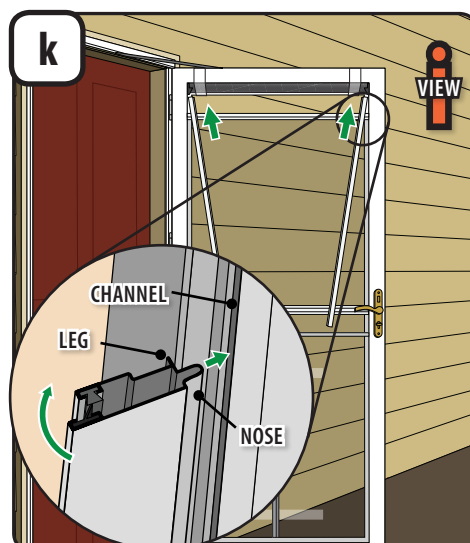
1. Starting at the bottom, pull the right insect screen track retainer out from the door frame. Pliers may be used to start the process. Carefully pull toward you and sideways toward center of door to peel it out of the track.
2. To remove the insect screen track retainer from the retractable insect screen unit, slide the insect screen track retainer down.
3. Repeat steps 1 and 2 for left retainer and set both aside for reinstallation.



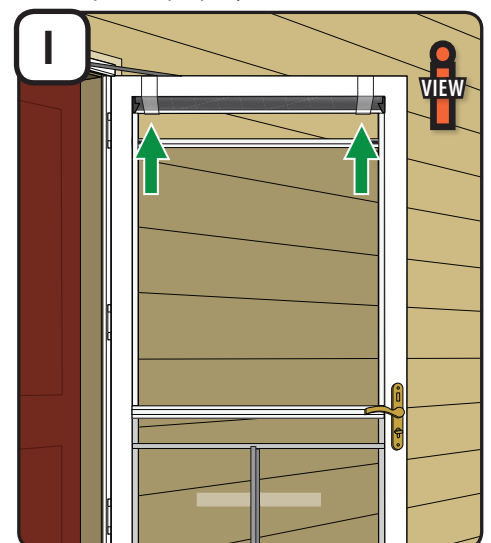
1. Using one hand, slide the left latch inward and then pull upper left hand corner of the ventilating glass panel towards you until it is free from the door frame. While maintaining a firm grasp, do the same for other side.
2. Grasp both sides of the ventilating glass panel while raising it up and tilt it in towards you. Remove it from the door frame after the bottom of the ventilating glass panel is above the center mullion and rotate it out vertically. Dispose of properly.



1. Grasp replacement panel with latches up and facing in toward you. Insert bottom left tab into door frame channel and rotate vertically while sliding right tab into channel. Tip panel toward door and slide down until resting on prop rod which should still be taped in place.
2. Then slide latch and push corner of panel into frame until seated on both sides. Test panel to ensure it moves freely. Then move down until panel frame is in the notch of the prop rod.



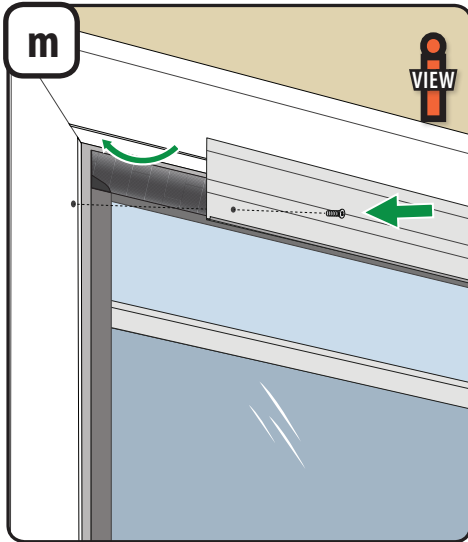
1. Place the right replacement screen track retainer with the nose into channel and leg facing in toward door frame. Rotate into door frame until leg snaps into place.
2. Slide the screen track retainer up over the lower tab of the retractable insect screen assembly.
3. Use your fingers to work screen track retainer into channel and snap leg into place as you work down. Repeat steps for other screen track retainer.



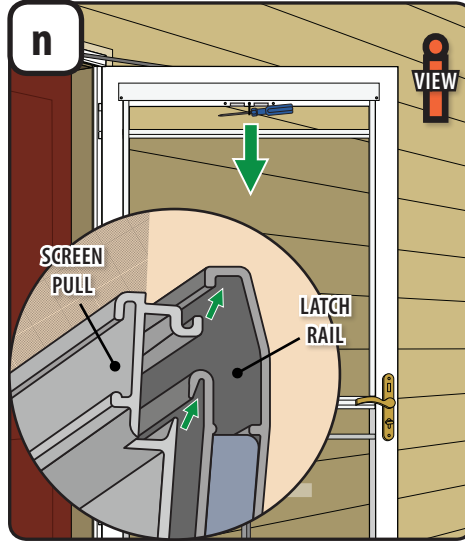
1. Cut and remove the filament tape securing the screen unit to the door frame.

1**REMOVE VENTILATING GLASS PANEL AND INSTALL REPLACEMENT PART (continued)**

Tools recommended:

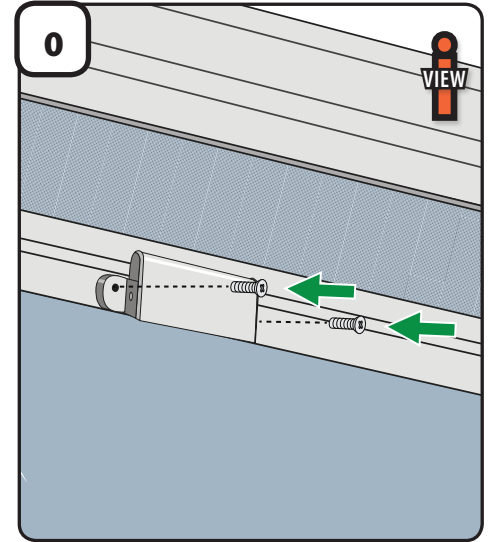


1. Reinstall insect screen cover plate, seating top of plate into the channel on door frame, and rotating down to align holes in cover plate with holes on each side of the door frame.
2. Secure the insect cover plate to the door by reinstalling the two (2) screws with a Phillips screwdriver.



WARNING
The SlideAway® insect screen is stored inside the door with a highly tensioned spring. If released, insect screen may retract suddenly causing injury or product damage. Maintain a firm grasp when attaching the insect screen to the window.

1. Insert the shaft of a Phillips head screwdriver through the zip tie. With a hand on each side of the screw driver, pull the insect screen pull down over the glass panel latch rail.
2. To correctly align the insect screen pull and the glass panel latch rail, lower the screen pull below the top of the glass panel latch rail. The holes in the insect screen pull and glass panel rail should be aligned.
3. A slight push to the exterior will align the insect screen pull lips and glass panel latch rail lips. Raise the insect screen slightly, push in at each end of the insect screen pull to make sure that it is flush with the glass panel latch rail. The insect screen pull will be fully engaged when the glass panel latch rail is interlocked with the insect screen pull hooks.
4. Once the insect screen pull is fully engaged, remove the screw driver and cut zip tie with scissors. Gently pull zip tie out of the insect screen pull and dispose of properly.



1. Align the holes in the window latch assembly with the holes in the insect screen pull.
2. Use the two (2) #6 x 3/4" screws previously removed to attach the window latch assembly to the insect screen pull and glass panel frame. Do not overtighten.
3. Close window and remove tape from lower panel holding prop rod in place. Properly dispose of prop rod.