

Installation Guide

Replacement SmoothControl+™ Center Mullion for Andersen® 1-1/2" Self-Storage Storm Doors



Please Do Not Return Product to Store!

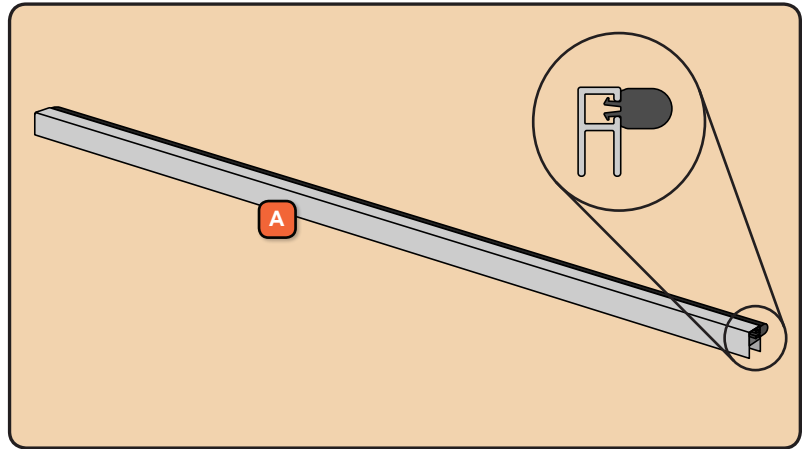
PLEASE call the storm door Solution Center at 1-800-933-3626,
with any questions regarding installation, lost part replacement, or anything else related to your storm door purchase.

Read this entire guide before you begin your installation. If your abilities do not match the requirements of this installation, contact an experienced contractor.

PARTS OVERVIEW

Your installation kit should contain the following parts. However, in some door models, not all of the parts will be used.

- A** Center Mullion (Qty 8, one in each color)



SAFETY FIRST: Please read and follow all Cautions and Warnings in this guide.

RECOMMENDED TOOLS



Safety Glasses



Pliers



Work Gloves

! WARNING

Storm doors have small parts. Small parts if swallowed could pose a choking hazard to young children. Dispose of unused, loose, or easily removed small parts. Failure to do so could result in injury.

! CAUTION

Some components may contain sharp edges. Wear appropriate protective equipment to avoid potential injury.

! WARNING

Follow manufacturers' instructions for hand and power tools. Always wear safety glasses. Failure to do so could result in injury, product or property damage.



This is the Safety Alert Symbol used to alert you to potential injury hazards. Obey all safety messages that follow this symbol to avoid possible injury or death.

Signal Word and Consequence

COULD

Result in:



WARNING

Major Injury / Death

COULD

Result in:



CAUTION

Minor Injury

COULD

Result in:



NOTICE

Product or Property Damage

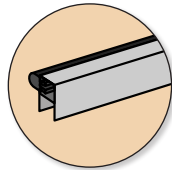


IMPORTANT

Procedure and Product Information

1

REMOVE CENTER MULLION AND INSTALL REPLACEMENT PART

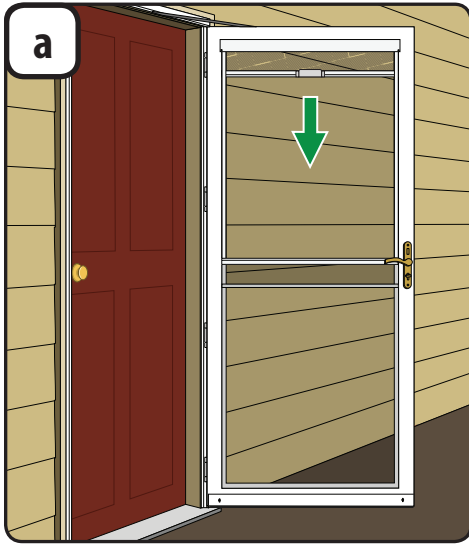


Center Mullion

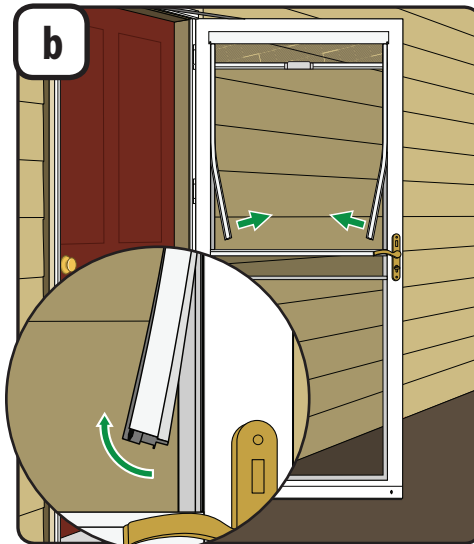
Tools recommended:



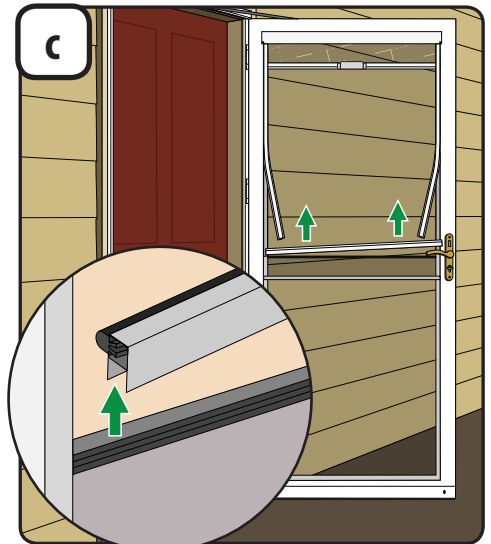
Pliers



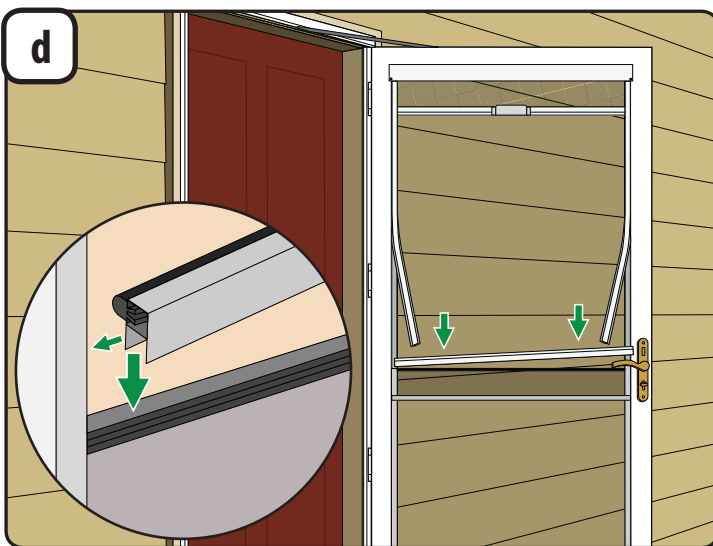
1. Lower the ventilating window several inches so the bottom of the ventilating window is below the center mullion.



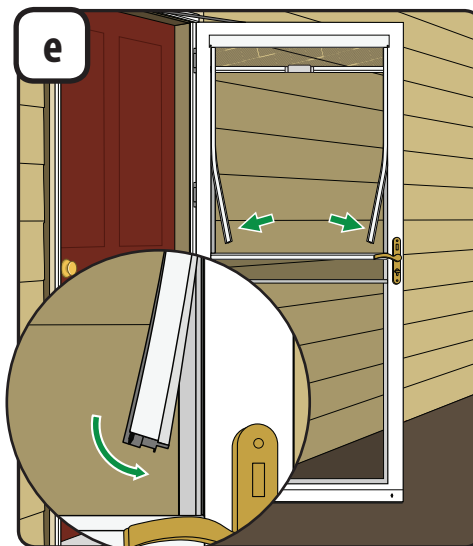
1. Starting at the bottom, pull the right insect screen track retainer out from the door frame approximately 1/3 of the way up. Pliers may be used to start the process. Carefully pull toward you and sideways toward center of door to peel it out of the track.
2. Repeat step for the left side.



1. Gently move the right insect screen track retainer out of the way and pull up on the end of the center mullion until it clears the glass.
2. Continue to pull up on the center mullion along the entire length. When you reach the left insect screen track retainer, gently move it out to the way to completely remove the center mullion.
3. Properly dispose of center mullion.



1. Choose the replacement center mullion that matches the door color, properly dispose of the others.
2. Gently move the left insect screen track retainer out of the way and slide the center mullion "U" channel over the glass. The bulb seal should be towards the exterior.
3. Push the end of the center mullion flush to the edge of door frame, making sure it is fully seated on the glass.
4. Continue to push center mullion down the entire length. Gently move right insect screen track retainer out of way when you reach the end.



1. Use your fingers to work screen track retainers back into channel and snap leg into place as you work down. Repeat for other screen track retainer.