

# Handle Replacement Guide



Please Do Not Return Product to Store!

PLEASE call the storm door Solution Center at 1-800-933-3626

with any questions regarding installation, lost part replacement, or anything else related to your storm door purchase.

- If your abilities do not match the requirements of this installation, contact an experienced contractor.
- Andersen has no responsibility in regard to the post-manufactured assembly and installation of Andersen products.

## PARTS OVERVIEW

- 1 Outside Handle with Nylon Washer Installed
- 2 Inside Handle with Nylon Washer Installed
- 3 Spindle

## RECOMMENDED TOOLS

- Safety Glasses
- Screwdriver



## WARNING / ADVERTENCIA / AVERTISSEMENT :

- Follow manufacturers' instructions for hand or power tools. Always wear safety glasses. Failure to do so may result in injury and/or product damage.
- Siga las instrucciones del fabricante para herramientas manuales o eléctricas. Siempre use antiparras de seguridad. No hacerlo puede provocar lesiones en las personas y/o daños en el producto.
- Suivez les directives d'utilisation du fabricant pour les outils manuels ou électriques et portez toujours des lunettes de sécurité, sans quoi vous risquez de vous blesser ou d'endommager le produit.

## 1. DISASSEMBLE HANDLE

Tools needed:

- Screwdriver



### LEFT HANDED - INTERIOR VIEWS

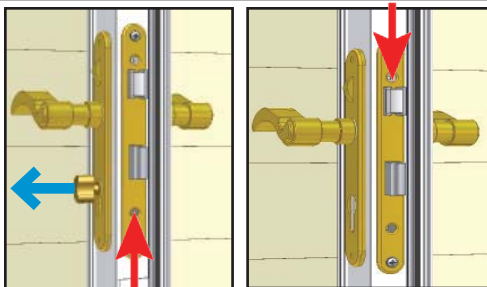


Figure 1

Figure 2

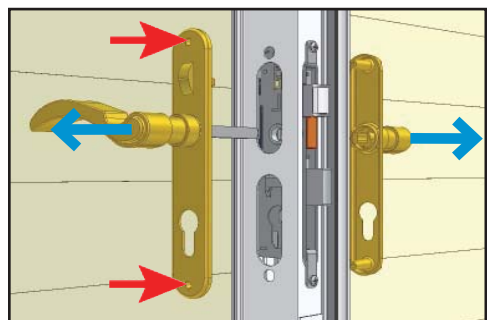


Figure 3

In this step, you will disassemble the handle set.

1. Remove one #10 x 1 1/2" screw, and then remove the key cylinder. Retain screw for reassembly. (Figure 1)
2. Remove one #10 x 5/8" screw, and then remove lock case trim plate. (Figure 2)
3. Remove two #8 x 1 1/2" screws and pull handles apart to remove the handles and trim plates from the door frame. Retain screws for reassembly (Figure 3)

### RIGHT HANDED - INTERIOR VIEWS

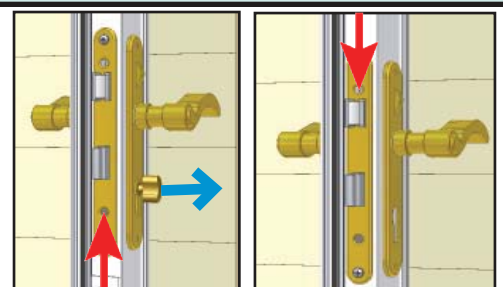


Figure 1

Figure 2

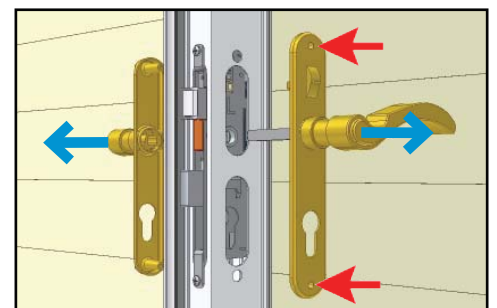


Figure 3



Come home to Andersen.™

EMCO Enterprises, Inc., is a wholly owned subsidiary of Andersen Corporation. EMCO manufactures and supports the limited warranties for Andersen® and EMCO® doors. "Andersen", "EMCO" and all other marks where denoted are trademarks of Andersen Corporation. ©2011 Andersen Corporation. All rights reserved.

EMCO Enterprises, Inc.  
PO Box 853  
Des Moines, IA 50306-0853  
Rev 1-2012 12007  
P/N 621146

## 2. REMOVE HANDLE FROM TRIM PLATE

Tools needed:

• Screwdriver



### LEFT HANDED - EXTERIOR VIEWS

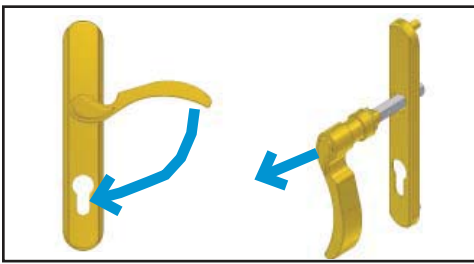


Figure 3

1. Remove handles from trim plates by rotating handle until it is pointing toward the bottom of the trim plate, and then pull the handle away from the trim plate. (Figure 3)
2. Properly discard handles and spindle

### RIGHT HANDED - EXTERIOR VIEWS

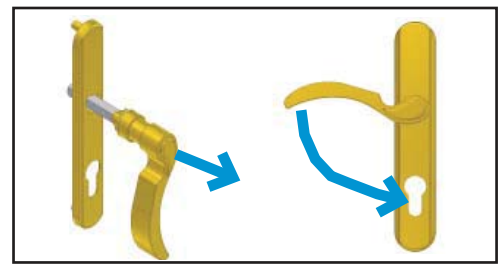


Figure 3

## 3. INSTALL HANDLES AND KEY CYLINDER

Tools needed:

• Screwdriver



### LEFT HANDED - EXTERIOR VIEWS

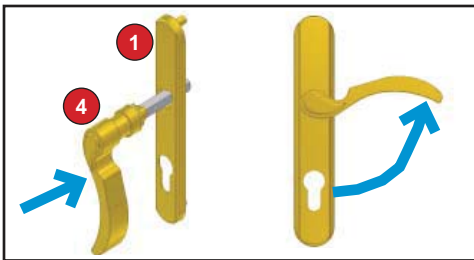


Figure 4

1. Insert Spindle into one of the handles
2. Insert handle into outside trim plate (with Andersen logo) with lever pointing down and rotate the handle to secure it. (Figure 4)
3. Repeat for other handle and inside trim plate (with slider).

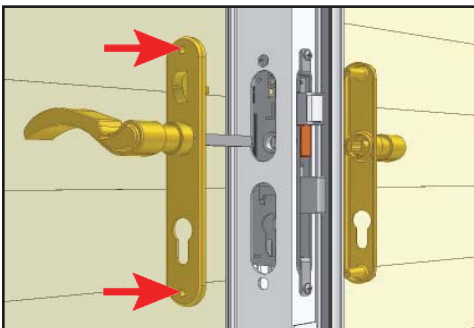


Figure 5

4. With handle levers held horizontal, install both handle assemblies onto the door. The spindle will pass through the square hole in the lock case and into the other handle. Attach trim plates together using two #8 x 1 1/2" screws. (Figure 5)

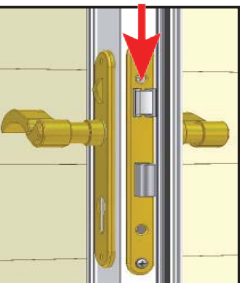


Figure 6

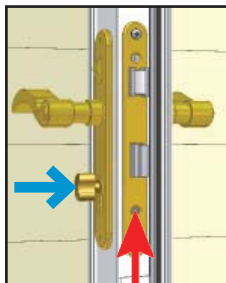


Figure 7

5. Install lock case trim plate onto lock case and fasten with one #10 x 5/8" screw. (Figure 6)
6. Insert dead bolt key cylinder into lock case and fasten with one #10 x 1 1/2" screw. (Figure 7)

### RIGHT HANDED - EXTERIOR VIEWS

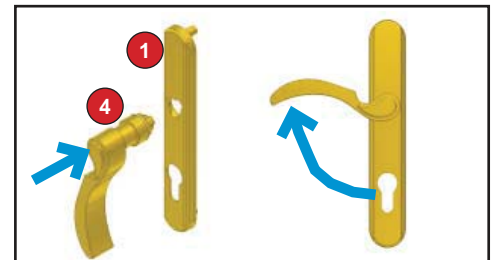


Figure 4

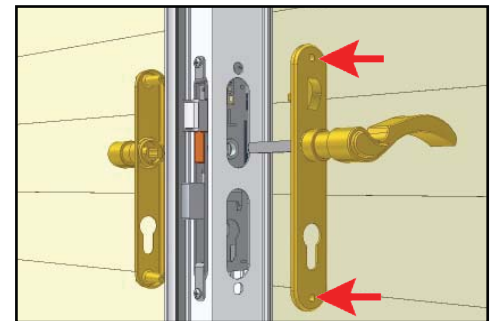


Figure 5

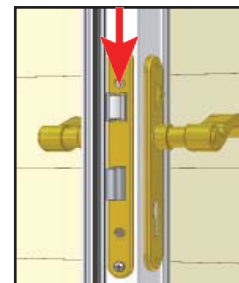


Figure 6

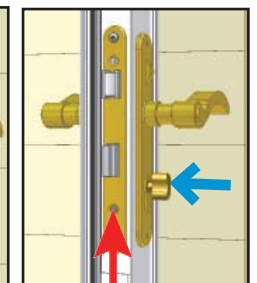


Figure 7