

# Installation Guide



*Come home to Andersen.™*

## For Astragal Kit Latch Nose Drill Instructions on Quick Change Window System

### IMPORTANT

**READ ENTIRE GUIDE BEFORE BEGINNING INSTALLATION.** Please handle your components with care to avoid damage and/or scratches.

**PLEASE NOTE:** Proper assembly, installation, and maintenance are essential if the benefits of your Andersen® product are to be fully attained. Therefore, please read and follow this instruction guide completely. If your abilities do not match this procedure's requirements, contact an experienced contractor.

You may direct any questions to the **Solution Center** at 1-800-933-3626.

### **WARNING**

Metal fasteners and other hardware components may corrode when exposed to preservative treated and fire-retardant treated lumber. Obtain and use the appropriate size stainless steel fasteners and hardware as called out by the installation guide to fasten unit to any rough opening made from pressure treated and fire-retardant treated lumber. Failure to use the appropriate materials for the installation may cause a failure resulting in injury, property or product damage.

### **WARNING**

Windows and door accessories can be heavy. Use safe lifting techniques and a reasonable number of people with enough strength to lift, carry and install doors, windows and accessory products to avoid injury and/or product damage.

### ENCLOSED IN DRILL KIT:

- Drilling Instruction Guide
- Drill Template
- 13/16" Spade Drill Bit

### RECOMMENDED TOOLS

- Safety Glasses
- Metal File
- Drill
- 1/8" Drill Bits
- Pencil
- Center Punch
- Tape

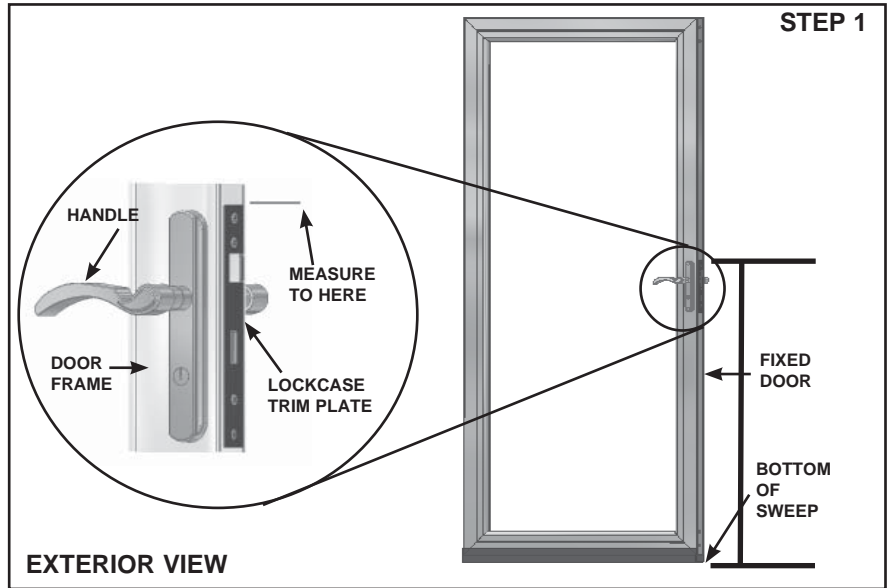
### **WARNING**

Follow manufacturers' instructions for hand or power tools. Always wear safety glasses. Failure to do so may result in injury and/or product damage.

## 1. MEASURE FIXED DOOR:

- A. On the fixed door, measure from the bottom of the sweep to the top of the lockcase trim plate.

RECORD MEASUREMENT HERE \_\_\_\_\_

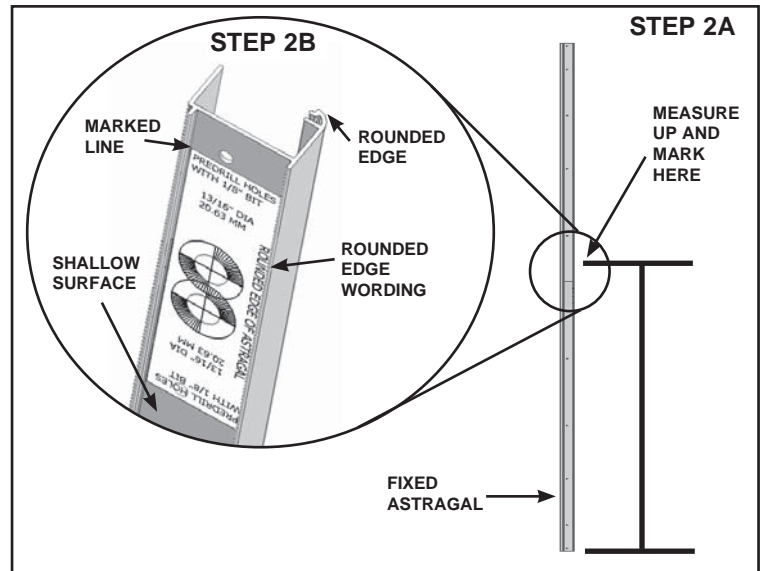


## 2. PLACE DRILL TEMPLATE ON FIXED ASTRAGAL:

- A. On the shallow surface of the fixed Astragal cut in Step six (6) of your astragal installation manual, measure from the bottom up the distance that you recorded in Step 1 above and mark a line with a pencil.
- B. Place the top of the drill template at this mark and tape in place.

### IMPORTANT

Make sure the "ROUNDED EDGE OF ASTRAGAL" wording is lined up with the rounded edge of the fixed astragal.

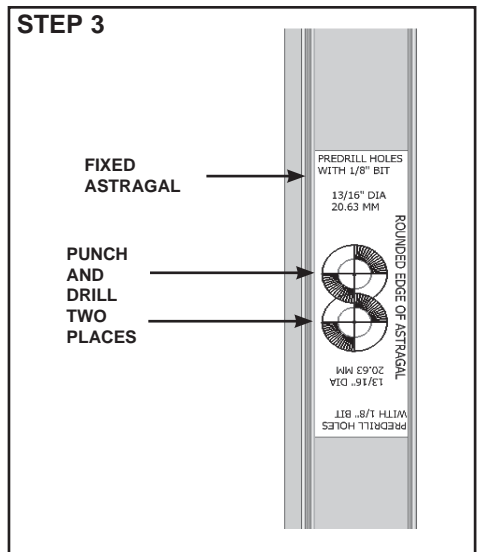


## 3. DRILL LATCH NOSE HOLES:

- A. Use a center punch or the sharp edge of the spade drill bit to mark the center of the holes.
- B. Predrill both holes with a 1/8" drill bit.
- C. Using the 13/16" spade drill bit provided, drill two (2) overlapping 13/16" holes through the fixed astragal.

### ⚠ WARNING

The drilled holes will have a sharp edge. Do not insert finger into holes drilled in the astragal. Inserting fingers into holes during installation process may result in injury.

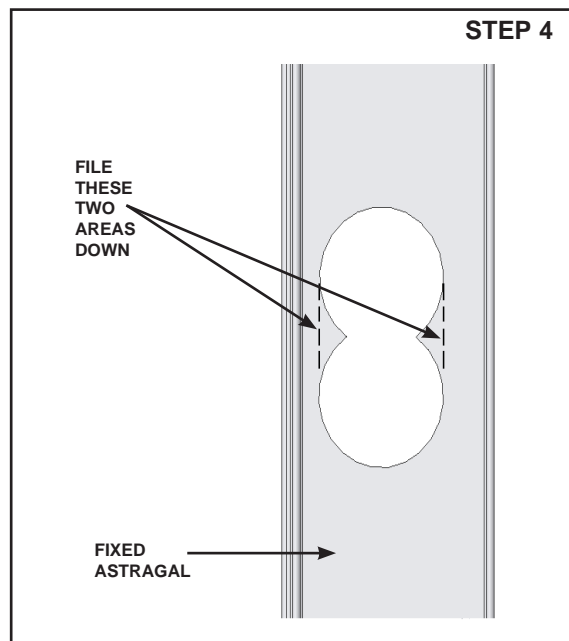


#### 4. FILE HOLE POINTS:

### WARNING

Once the holes are drilled, generously flatten the two (2) points created during the drilling process. Failure to flatten the points may result in the window retention system not functioning properly and injury.

- A. Using a flat metal file, file down the two (2) metal points created during the drilling process.



#### 5. FIT FIXED ASTRAGAL TO DOOR:

- A. Align the top end of the fixed astragal with the top edge of the door
- B. Look at the latch nose of the handleset and make sure that it is fully extended through the holes drilled in the fixed astragal. If the latch nose cannot fully extend, continue to flatten the points of the holes with a metal file until it is free to operate.
- C. Continue installing your double door kit according to the astragal installation manual.

