

Replacement Guide



For Edge Seal on Fullview Doors with Laminated Glass and Multi-Point Locking System

IMPORTANT: READ ENTIRE GUIDE BEFORE BEGINNING INSTALLATION.

PLEASE NOTE: Proper assembly, installation and maintenance are essential if the benefits of your Andersen® product are to be fully attained. Therefore, please read and follow this Replacement Guide completely. If your abilities do not match this procedure's requirements, contact an experienced contractor.

You may direct any questions to the **Solution Center** at 1-800-933-3626, Monday through Friday, 7 a.m. to 7 p.m. Central Time, and Saturday and Sunday, 8 a.m. to 5 p.m. Central Time.

⚠ WARNING:

Improper use of hand or power tools could result in personal injury and/or product damage. Follow equipment manufacturer's instructions for safe operation. Always wear safety glasses.

⚠ WARNING:

Weight of window and door unit(s) and accessories will vary. Use a reasonable number of people with sufficient strength to lift, carry, and install window and door unit(s) and accessories. Always use appropriate lifting techniques. Failure to do so may result in injury.

- | | | | |
|------------------|----------------|-----------------------------|--------------------|
| — Safety Glasses | — Hack Saw | — Drill | — 1/8" drill bit |
| — Metal File | — Tape Measure | — Phillips Head screwdriver | — 3/32" Hex Wrench |
| — Tape | — Pencil | | |

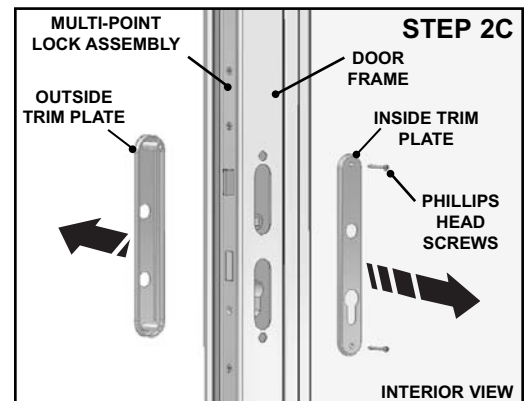
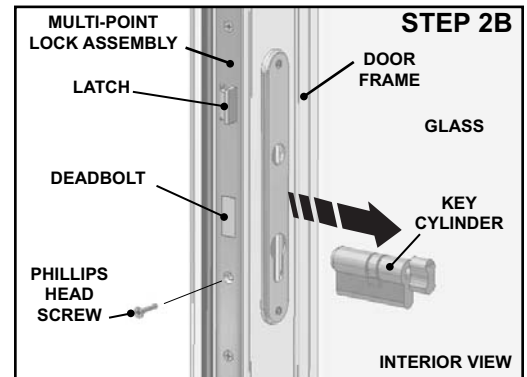
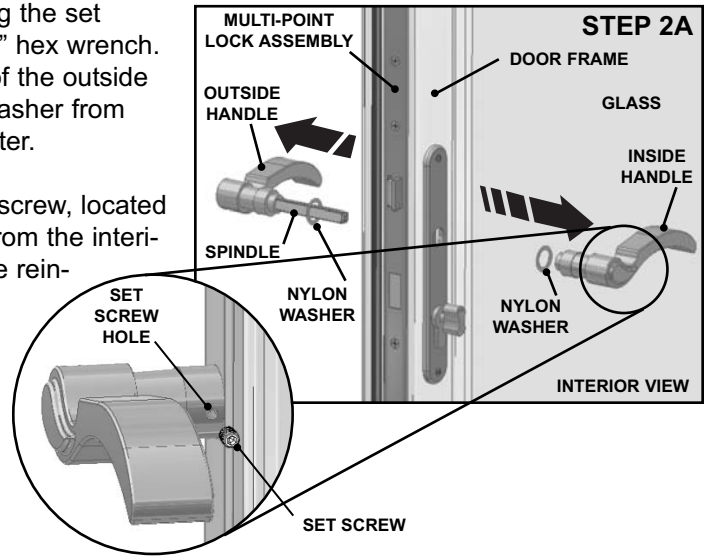
1. OPEN DOOR AND SECURE:

- A. Open the door and set the closers to hold the door open.



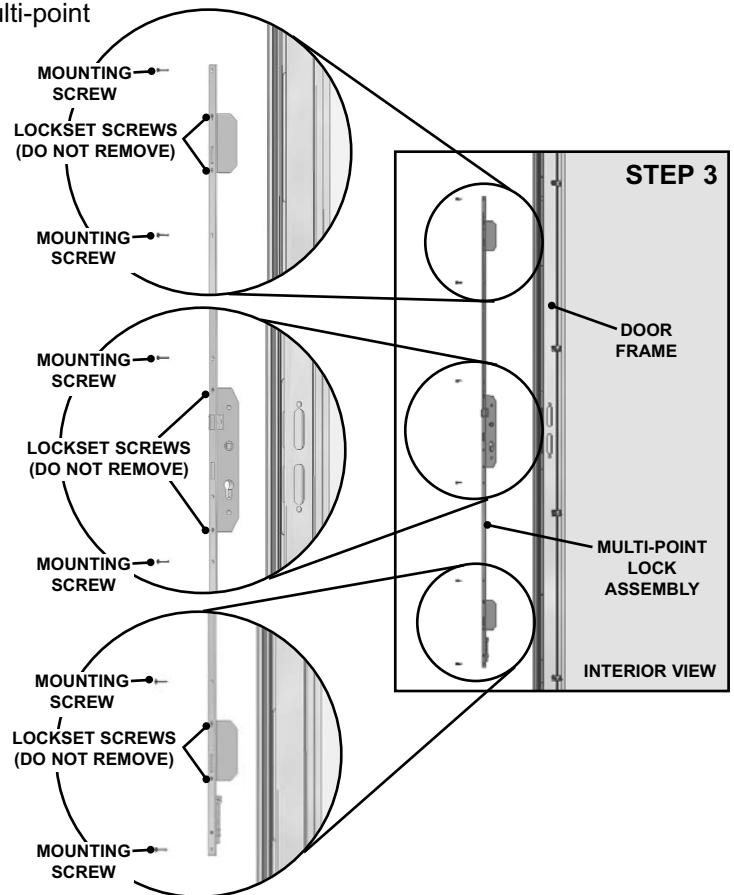
2. REMOVE HANDLE:

- A. Remove the door handles and nylon washers by loosening the set screw located on the side of the inside handle with a 3/32" hex wrench. Slide the inside handle and nylon washer off the spindle of the outside handle. Remove the outside handle, spindle and nylon washer from the door. Save all handle components to be reinstalled later.
- B. Remove the key cylinder by unscrewing the phillips head screw, located below the deadbolt, as shown. Pull the key cylinder out from the interior side of the door. Save the screw and key cylinder to be reinstalled later.
- C. Remove the inside and outside trim plates by unscrewing the two phillips head screws as shown and removing the plates from the door. Save the screws and trim plates to be reinstalled later.



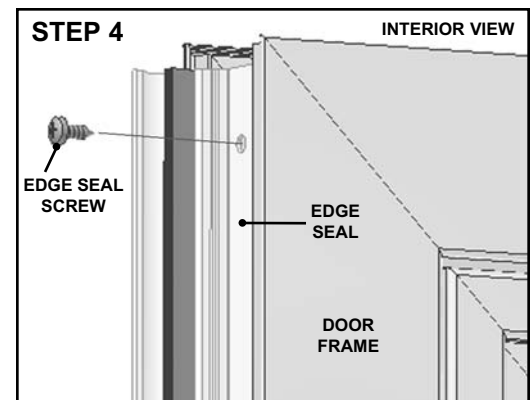
3. REMOVE MULTI-POINT LOCK ASSEMBLY:

- A. Remove the six (6) mounting screws attaching the multi-point lock assembly to the edge of the door frame.
- B. Remove the multi-point lock assembly from the door. Save the mounting screws and multi-point lock assembly to be reinstalled later.



4. REMOVE EDGE SEAL:

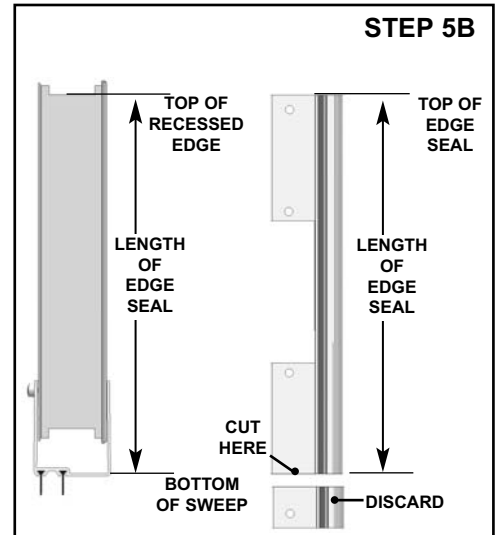
- A. Remove the edge seal by removing the three (3) edge seal screws. Properly dispose of edge seal and screws.



5. CUT EDGE SEAL:

- A. Hold replacement edge seal up to handle side of door so round side faces outside and weather pile seals against handle side Z-bar. Mark top of edge seal with a piece of tape.
- B. Measure from top of recessed edge of the door frame to bottom of sweep. With this measurement, measure from top of edge seal, mark a cutting line and cut at mark with hacksaw.

Edge Seal Height _____

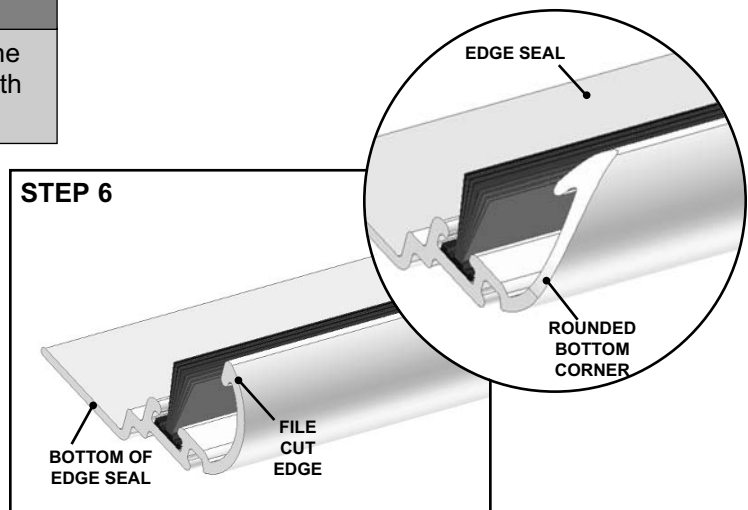


6. FILE EDGE SEAL:

- A. Round the bottom corner of the edge seal with a metal file to avoid sharp edges.

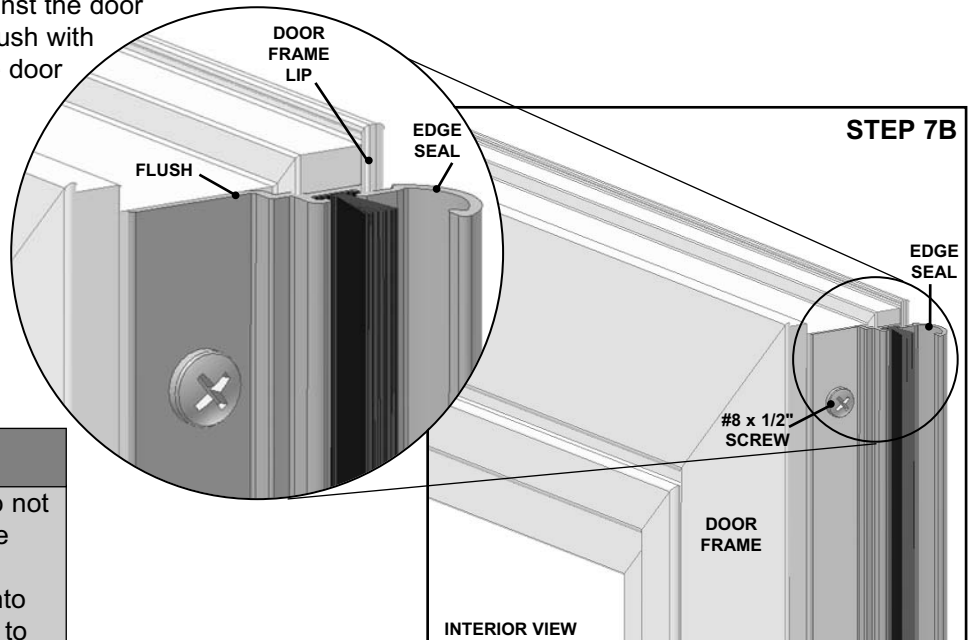
! WARNING

Once the edge seal is cut to length, generously round the bottom corner of the edge seal with a metal file to smooth sharp edges. Failure to do so may result in injury.



7. INSTALL EDGE SEAL:

- A. Place edge seal so it is rested against the door frame lip and end of edge seal is flush with the recessed edge at the top of the door frame.
- B. Secure edge seal with three (3) #8 x 1/2" painted screws included in the kit.

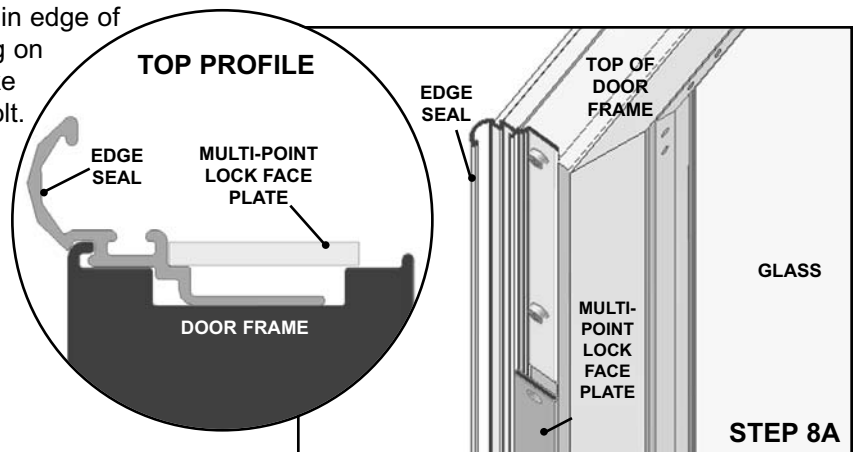


NOTICE:

If the pilot holes in the door frame do not line up with the mounting holes in the new edge seal, drill a 1/8" pilot hole through the top mounting hole and into the door frame edge. Be careful not to drill completely through the door. Holding the seal in place, secure the seal with one (1) #8 x 1/2" screw. With the seal secure, drill and install the remaining two(2) #8 x 1/2" screws.

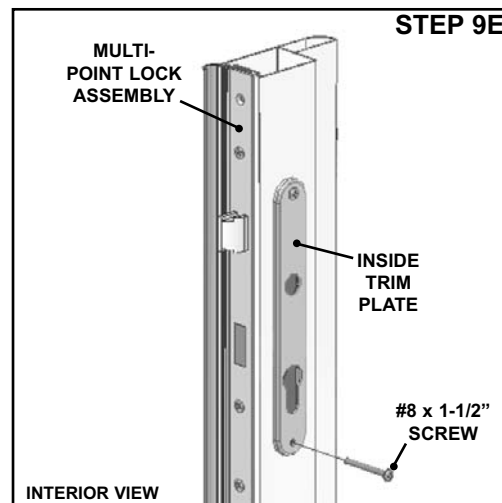
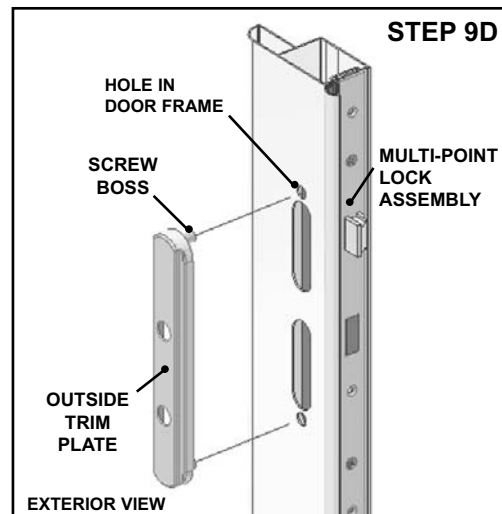
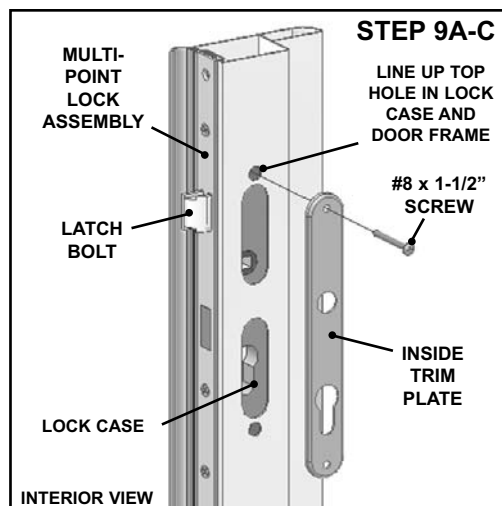
8. INSTALL MULTI-POINT LOCK ASSEMBLY

- A. Insert multi-point lock assembly into the slots in edge of door. Make sure face plate is properly resting on the door frame and edge seal. Check to make certain that the latch bolt is above the deadbolt.



9. INSTALL INSIDE AND OUTSIDE TRIM PLATES

- A. Insert one (1) #8 x 1-1/2" screw, previously removed, through the top hole of the inside trim plate and hold in one hand.
- B. With the other hand, raise the multi-point lock assembly by placing thumb under latch bolt and pushing up until the holes in the lock case are lined up with the holes on the inside of the door.
- C. Insert the screw in the trim plate through the upper pre-drilled hole on the inside of the door and through the hole in the lock case until trim plate is flat against inside of the door.
- D. Line up the top screw boss on the outside trim plate with the upper pre-drilled hole on the outside of the door and the inside trim plate screw. You may need to raise lock assembly slightly to line up screw with screw boss. Once they are lined up, thread the top inside trim plate screw into the top screw boss of outside trim plate. Do not tighten at this time.
- E. Insert one (1) #8 x 1-1/2" screw, previously removed, through the bottom hole of the inside trim plate, door and lock case. Thread screw into outside trim plate lower screw boss. Do not tighten at this time.



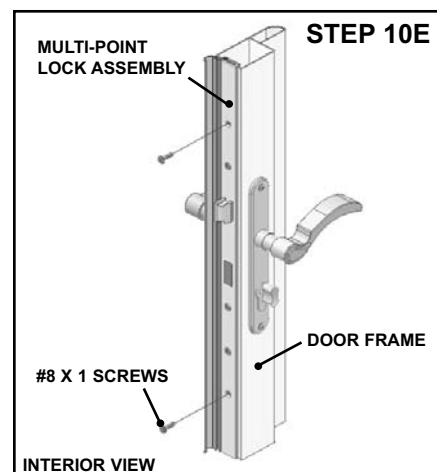
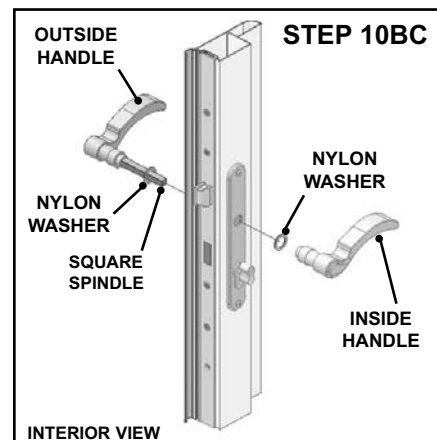
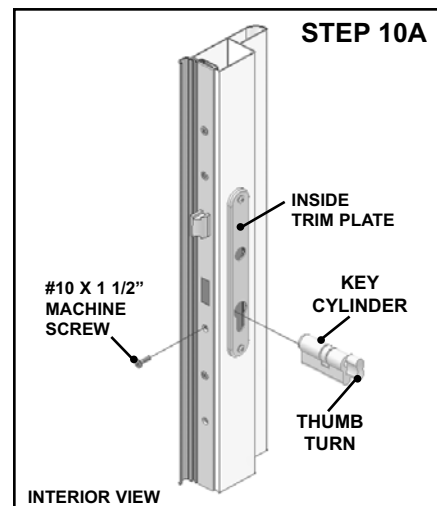
10. INSTALL KEY CYLINDER AND HANDLES

- A. Insert key cylinder through slot of inside trim plate with the thumbturn on the interior of the door. Secure key cylinder in place using #10 x 1 1/2" machine screw, previously removed.
- B. Place nylon washer over the outside handle spindle. Insert the square spindle of the outside handle through the square hole in trim plate, through lock case and push until square spindle is visible from interior of door.
- C. Slide second nylon washer and inside handle onto square spindle. Using the 3/32 hex wrench, tighten the set screw on the inside handle. Do not squeeze the handles together too tightly when tightening the set screw.
- D. Tighten trim plate and key cylinder screws at this time.
- E. Secure the multi-point lock assembly to the door frame with six (6) #8 x 1" phillips screws.

CAUTION

Do not overtighten screws securing multi-point lock assembly to door. Overtightening may cause binding of multi-point lock assembly and/or failure to operate.

- F. Check function of multi-point lock. When the handle is lifted up and released, the hooks should extend and retract into the multi-point lock assembly. If hooks do not extend out, slightly loosen the screws from Step 10E until handle set operates freely.



HANDLE STYLES MAY VARY FROM THOSE SHOWN