

Replacement Guide

EMCO®

For Colonial Grid on Self-Storing Door with Retractable Insect Screen

IMPORTANT: READ ENTIRE GUIDE BEFORE BEGINNING INSTALLATION.

PLEASE NOTE: Proper assembly, installation and maintenance are essential if the benefits of your EMCO® product are to be fully attained. Therefore, please read and follow this Installation Guide completely. If your abilities do not match this procedure's requirements, contact an experienced contractor.

You may direct any questions to the **Solution Center** at 1-800-933-3626, Monday through Friday, 7 a.m. to 7 p.m. Central Time, and Saturday and Sunday, 8 a.m. to 5 p.m. Central Time.

⚠ WARNING:

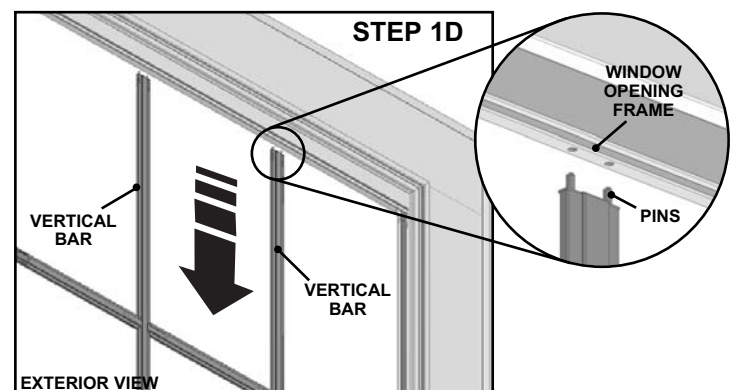
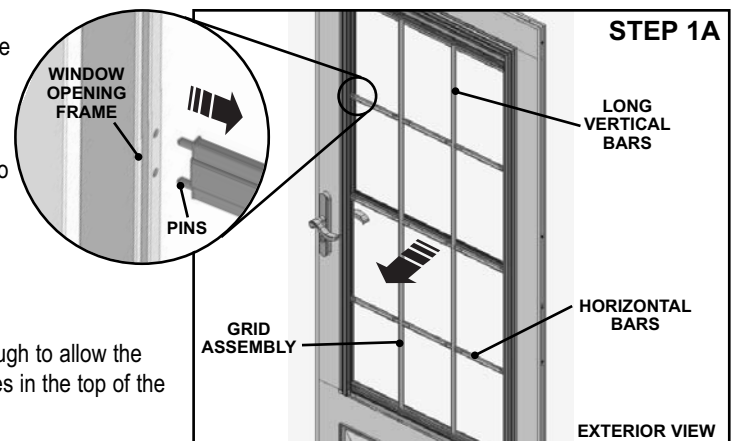
Improper use of hand or power tools could result in personal injury and/or product damage. Follow equipment manufacturer's instructions for safe operation. Always wear safety glasses.

⚠ WARNING:

Weight of window and door unit(s) and accessories will vary. Use a reasonable number of people with sufficient strength to lift, carry, and install window and door unit(s) and accessories. Always use appropriate lifting techniques.

1. REMOVE EXISTING COLONIAL GRID ASSEMBLY:

- Starting with the middle of the three horizontal bars, bow or pull the middle of the horizontal bar out from the window just enough to allow the pins on one end to slide out of the holes in the side of the window opening frame.
- Using the same procedure as above, slide the pins on the remaining two horizontal bars out of their respective holes on the same side of the window opening frame.
- Repeat steps 1A & 1B for the other side of the grid assembly.
- Bow or pull the middle of the vertical bars out from the window just enough to allow the pins on the top end of the vertical bars to slide down and out of the holes in the top of the window opening frame.
- Lift the grid assembly up and out of the holes at the bottom of the window opening. Discard and properly dispose of entire grid assembly.

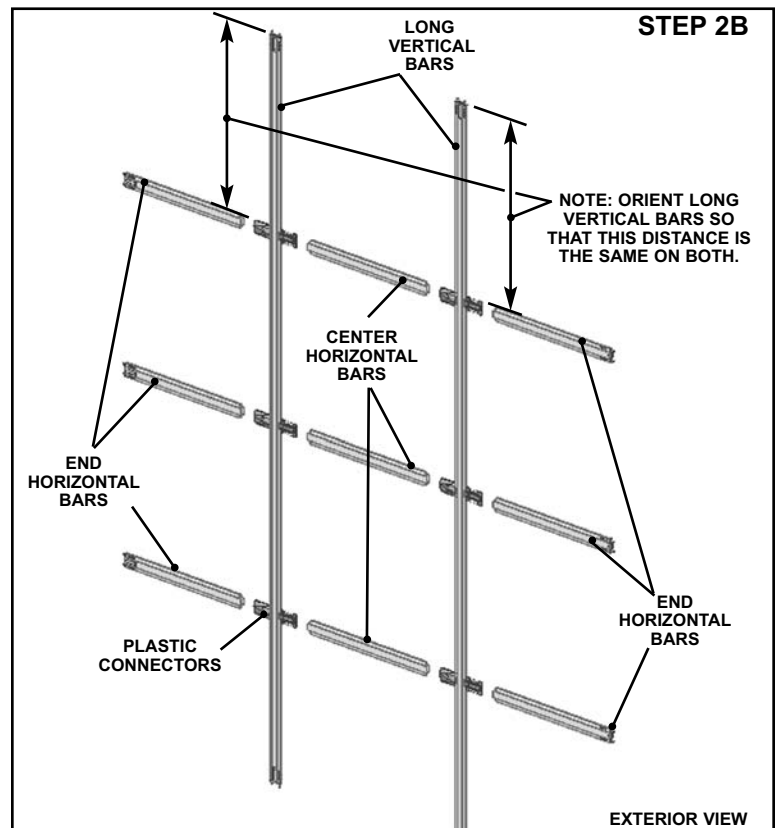
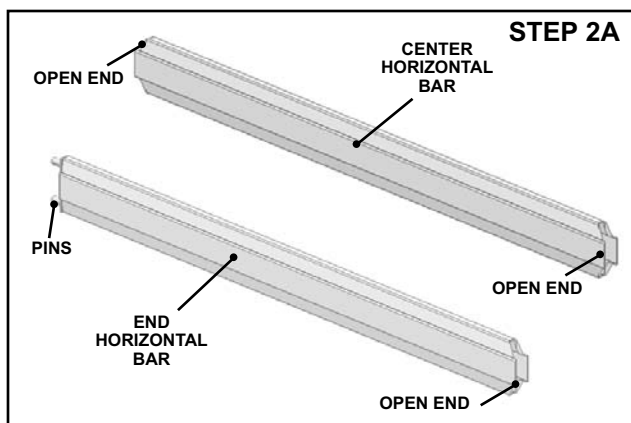


EMCO®

2. SEPARATE PARTS OF REPLACEMENT COLONIAL GRID:

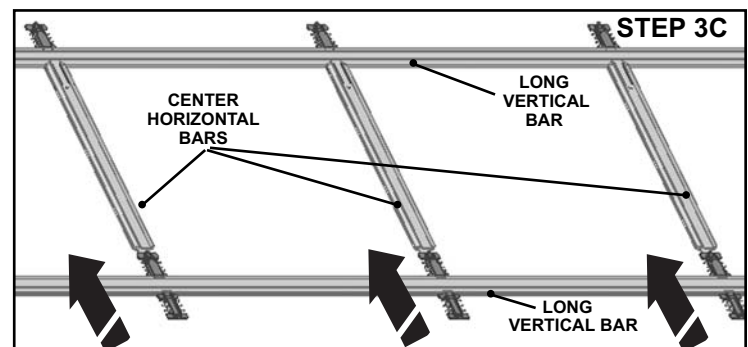
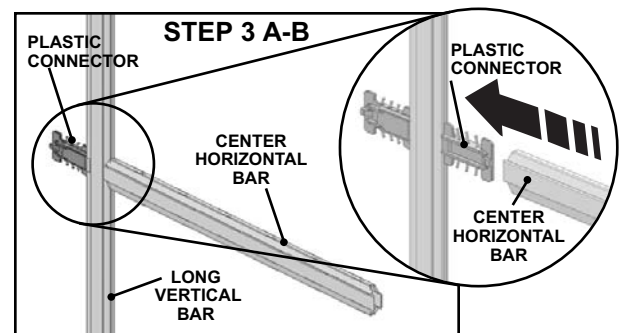
- A. Colonial grid kit will contain two (2) long vertical bars, three (3) short center horizontal bars, and six (6) short end horizontal bars.
- B. Lay parts out on a large flat surface, as shown. Make certain that the end horizontal bars have the open ends pointing towards the middle of the assembly.

NOTE: The distance from end of long vertical bar to plastic connectors differ from end to end. Be sure to orient both vertical bars the same way.



3. ATTACH CENTER HORIZONTAL BARS:

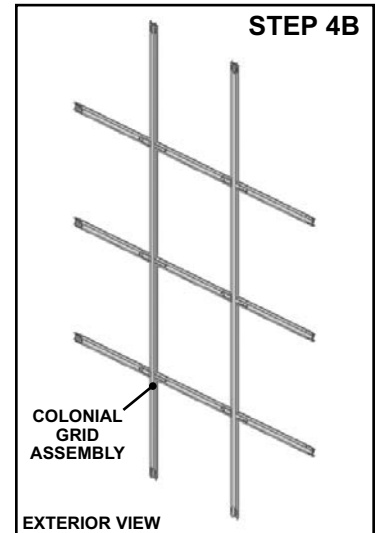
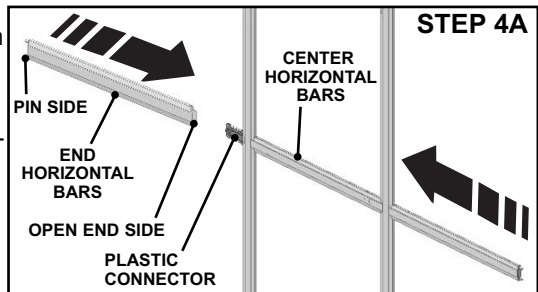
- A. Slide one end of a center horizontal bar over a plastic connector on one of the long vertical bars.
- B. Repeat step 3A and slide the remaining two center horizontal bars over the remaining two plastic connectors on the same side of the long vertical bar.
- C. Align the three plastic connectors on the remaining long vertical bar with the open ends of the three center horizontal bars. Press parts together.





4. ATTACH END HORIZONTAL BARS:

- A. The end horizontal bar has one end that is open and the other end with plastic pins. Slide the open end of the end horizontal bar over one of the plastic connectors on the long vertical bar.
- B. Repeat Step 4A for the remaining five end horizontal bars, arriving at a completed colonial grid assembly as shown, ready to install in door.



5. INSTALL NEW COLONIAL GRID ASSEMBLY:

- A. Orient assembled grid so that the two long vertical bars are running up and down. Also position grid assembly so that the end with the smallest distance from end of vertical bars to first horizontal bar is to the bottom. Insert the pins on the bottom of the vertical bars into the holes at the bottom of the window opening frame.
- B. Bow the middle of the vertical bars out from the window just enough to allow the pins at the top of the vertical bars to slide into the holes at the top of the window opening frame.
- C. Beginning with the top end horizontal bar on one side, bow the middle of the horizontal bar out from the window just enough to allow the pins on the end of the end horizontal bar to slide into the holes on the side of the window opening frame.
- D. Using the same procedure as Step 5C, slide the pins for the bottom end horizontal bar and then the middle end horizontal bar of the same side of the grid into their respective holes.
- E. Repeat Steps 5C & 5D for the other side of the grid assembly.

